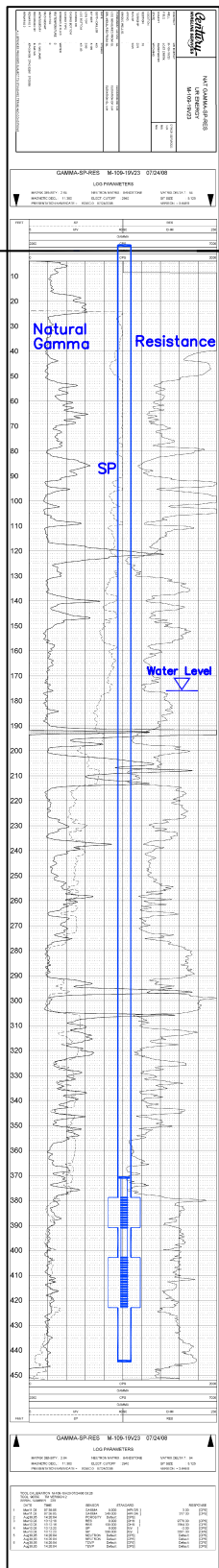


M-109

Lost Creek ISR, LLC  
**WELL COMPLETION REPORT**

M-109



WELL # M-109 SEO # 187653 Date Drilled: 7/24/08

Location: E 2,211,180 / N 594,671 (NAD 83)

Ground Elev: 6920.8' Measure Point Elev: 6921.72'

TD: 450' Hole Dia.: 7-7/8"

CASED to: 445' Casing: PVC SDR17 ID: 4.5" OD: 5"

GROUT: Portland Cement - Type I/II  
 Pumped thru casing, displaced to surface with water

COMPLETION Aquifer: UHJ, MHJ Sands

Static Water Level: Depth 176' Elev: 6745' (avg.)

UNDERREAM: Blade Dia: 10'  
 Intervals: from 379' to 391' / length 12'  
 from 403' to 423' / length 20'

SCREEN LINER ASSEMBLY

Description	Depth		Elev.		Length
	From - To	/ From - To			
K-packer	371'		6550'		
Screen	379'	391'	6542'	6530'	12'
Screen	403'	423'	6518'	6498'	20'

SCREEN SPECIFICATIONS:

Slot: 0.020" Composition 3" PVC

FILTER PACKING:

Volume:        (bags)(ft<sup>3</sup>) Sand Specs.         
 Method: N/A

WELL STIMULATION: Method Airlift

Yield: Good / Moderate / Poor

M-109