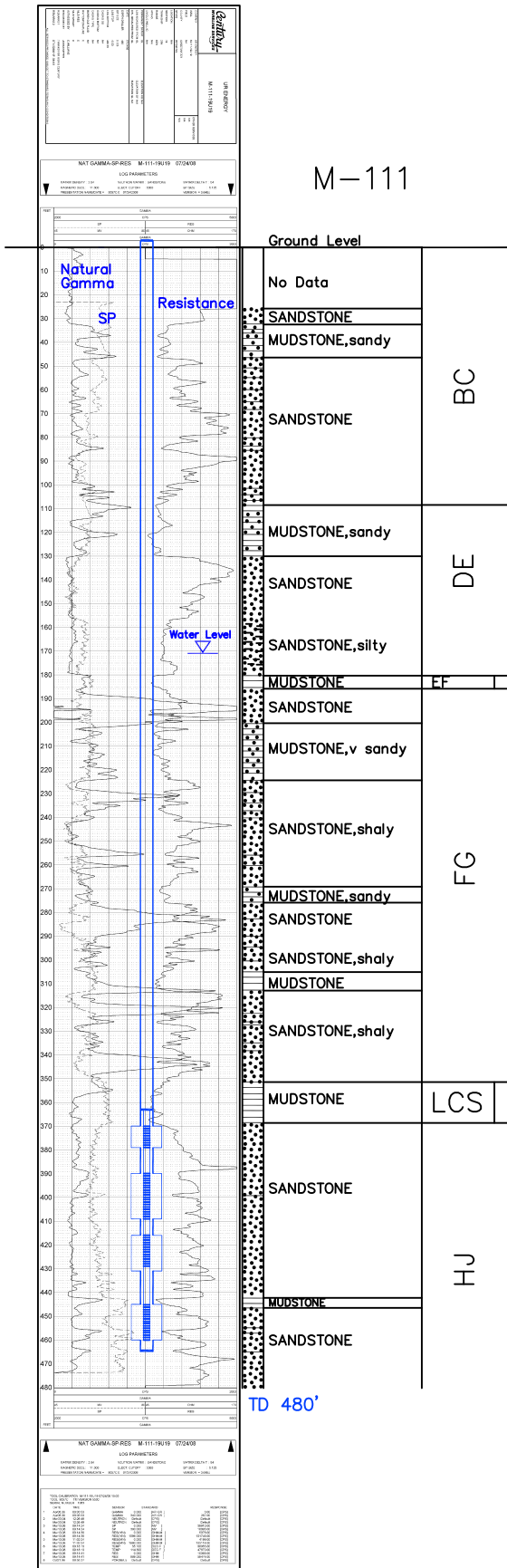


M-111

Lost Creek ISR, LLC
WELL COMPLETION REPORT

M-111



WELL # M-111 SEO # 187654 Date Drilled: 7/24/08

Location: E 2,210,270 / N 594,452 (NAD 83)

Ground Elev: 6908.1' Measure Point Elev: 6909.59'

TD: 480' Hole Dia.: 7-7/8"

CASED to: 465' Casing: PVC SDR17 ID: 4.5" OD: 5"

GROUT: Portland Cement – Type I/II
 Pumped thru casing, displaced to surface with water

COMPLETION Aquifer: UHJ*, MHJ, LHJ Sands
 Static Water Level: Depth 171' Elev: 6737' (avg.)

UNDERREAM: Blade Dia: 10.5"
 Intervals: from 370' to 379' / length 9'*
 from 390' to 409' / length 19'*
 from 416' to 431' / length 15'
 from 445' to 460' / length 15'

SCREEN LINER ASSEMBLY

Description	Depth		Elev.		Length
	From	To	From	To	
K-packer	363'		6545'		
Screen	370'	379'	6538'	6529'	9'*
Screen	390'	409'	6518'	6499'	19'*
Screen	416'	429'	6492'	6479'	13'
Screen	445'	460'	6463'	6448'	15'

SCREEN SPECIFICATIONS:

Slot: 0.020" Composition 3" PVC

FILTER PACKING:

Volume: _____ (bags)(ft³) Sand Specs. _____
 Method: N/A

WELL STIMULATION: Method Airlift

Yield: Good / Moderate / Poor

* Worked-over 9/28/10:
 New Completion Intervals: 370'-379'
390'-409'

M-111