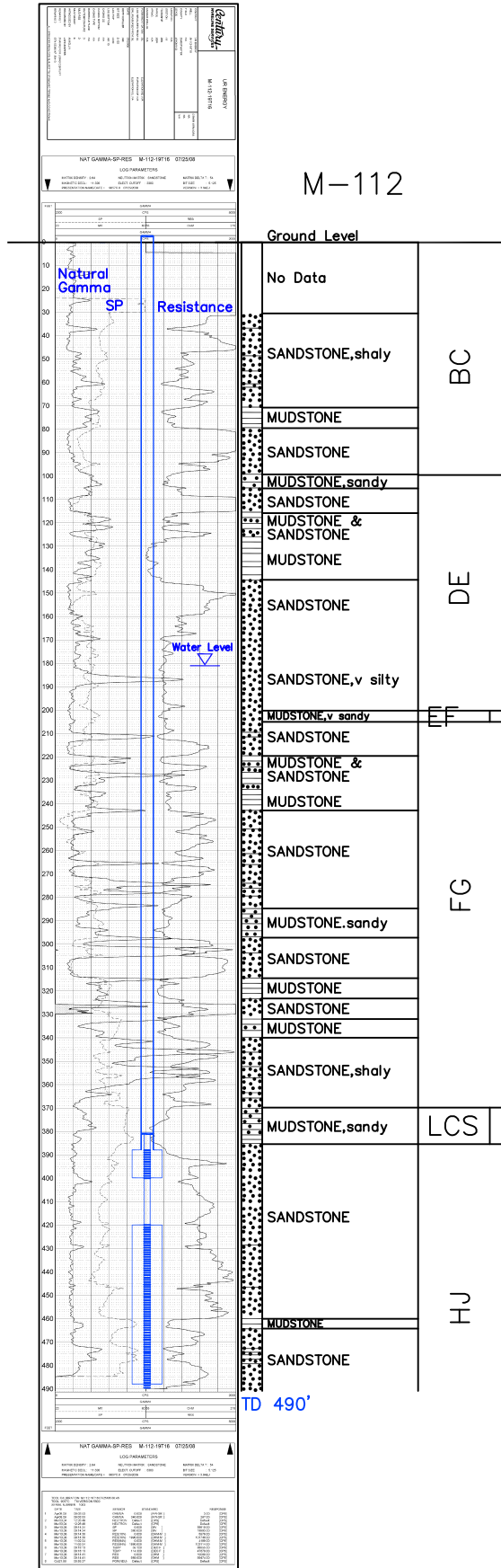


M-112

Lost Creek ISR, LLC
WELL COMPLETION REPORT

M-112



WELL # M-112 SEO # 187655 Date Drilled: 7/25/08

Location: E 2,209,790 / N 594,358 (NAD 83)

Ground Elev: 6917.2' Measure Point Elev: 6917.97'

TD: 490' Hole Dia.: 7-7/8"

CASED to: 388' Casing: PVC SDR17 ID: 4.5" OD: 5"

GROUT: Portland Cement - Type I/II
 Pumped thru casing, displaced to surface with water

COMPLETION Aquifer: UHJ, MHJ, LHJ Sands

Static Water Level: Depth 181' Elev: 3736' (avg.)

UNDERREAM: Blade Dia: 10"

Intervals: from 388' to 400' / length 12'

from 420' to 488' / length 68'

SCREEN LINER ASSEMBLY

Description	Depth		Elev.	Length
	From - To	/ From - To		
K-packer	381'	6536'		
Screen	388' - 400'	6529' - 6517'	12'	
	420' - 488'	6497' - 6429'	68'	

SCREEN SPECIFICATIONS:

Slot: 0.020" Composition 3" PVC

FILTER PACKING:

Volume: _____ (bags)(ft³) Sand Specs. _____

Method: N/A

WELL STIMULATION: Method Airlift

Yield: Good / Moderate / Poor

M-112