

M-113

Lost Creek ISR, LLC
WELL COMPLETION REPORT

M-113

WELL # M-113 SEO # 187656 Date Drilled: 7/25/08

Location: E 2,209,310 / N 594,510 (NAD 83)

Ground Elev: 6927.1' Measure Point Elev: 6928.01'

TD: 500' Hole Dia.: 7-7/8"

CASED to: 396' Casing: PVC SDR17 ID: 4.5" OD: 5"

GROUT: Portland Cement - Type I/II
 Pumped thru casing, displaced to surface with water

COMPLETION Aquifer: UHJ, MHJ, LHJ Sands

Static Water Level: Depth 192' Elev: 6735' (avg.)

UNDERREAM: Blade Dia: 10"

Intervals: from 396' to 406' / length 10'

from 417' to 439' / length 22'

from 447' to 463' / length 16'

from 472' to 480' / length 8'

SCREEN LINER ASSEMBLY

Description	Depth		Elev.		Length
	From - To		From - To		
K-packer	389'		6538'		
Screen	396'	406'	6531'	6521'	10'
Screen	417'	439'	6510'	6488'	22'
Screen	447'	463'	6480'	6464'	16'
Screen	472'	480'	6455'	6447'	8'

SCREEN SPECIFICATIONS:

Slot: 0.020" Composition 3" PVC

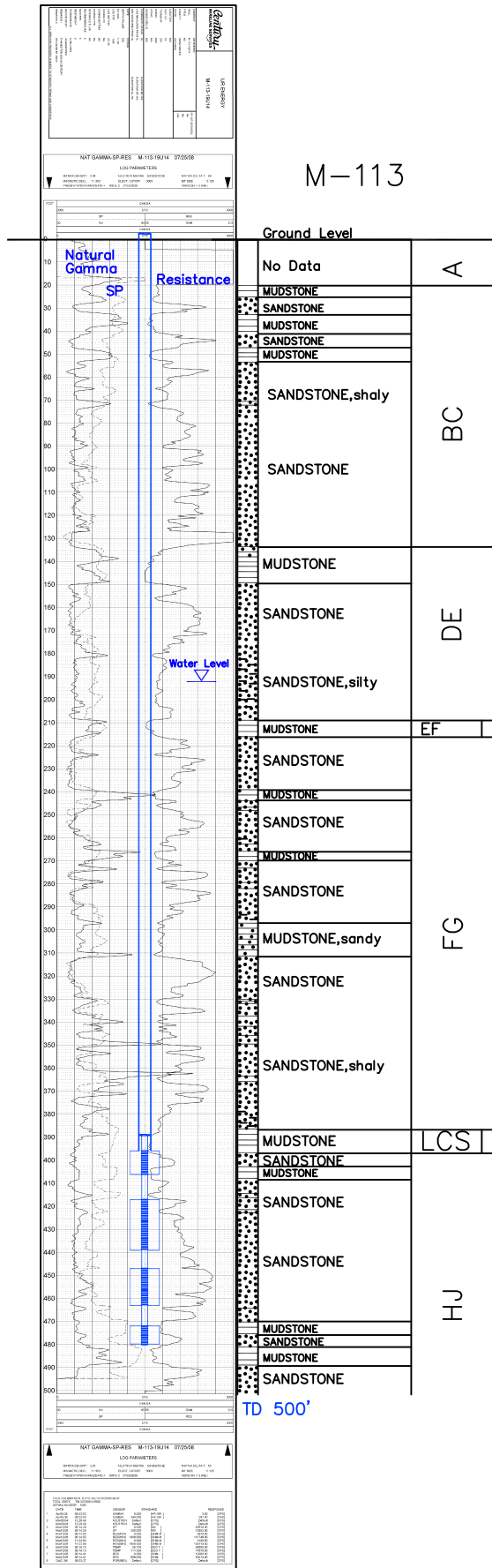
FILTER PACKING:

Volume: _____ (bags)(ft³) Sand Specs. _____

Method: N/A

WELL STIMULATION: Method Airlift

Yield: Good / Moderate / Poor



M-113