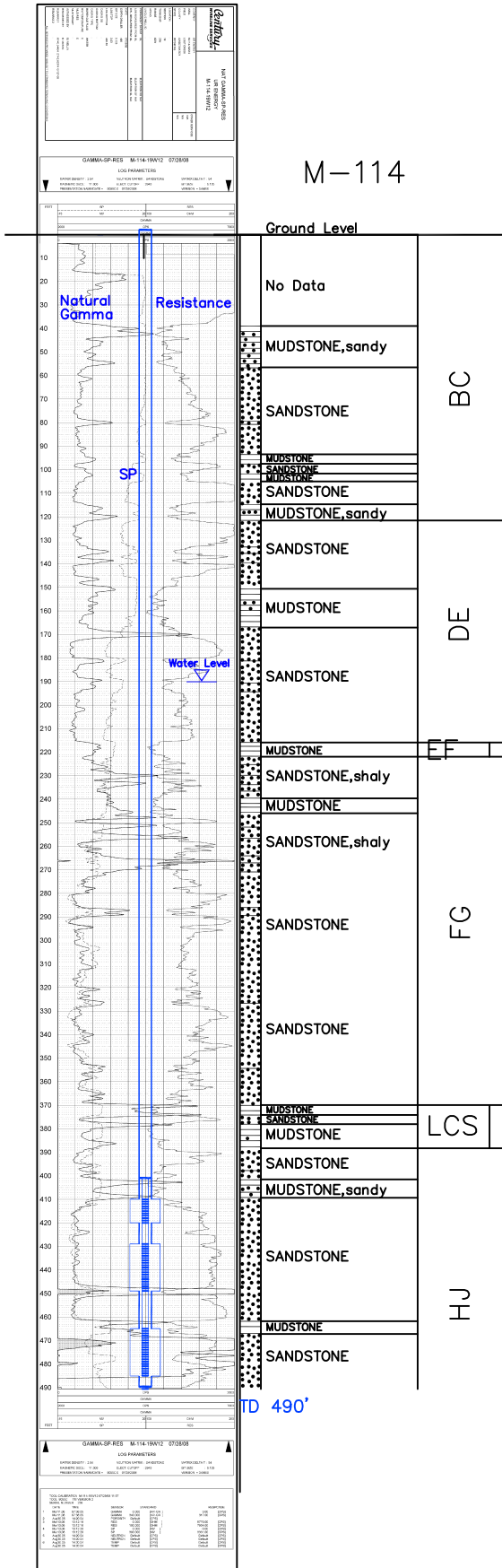


M-114

Lost Creek ISR, LLC
WELL COMPLETION REPORT

M-114



WELL # M-114 SEO # 187656 Date Drilled: 7/28/08

Location: E 2,208,942 / N 594,834 (NAD 83)

Ground Elev: 6929.4' Measure Point Elev: 6930.75'

TD: 490' Hole Dia.: 7-7/8"

CASED to: 490' Casing: PVC SDR17 ID: 4.5" OD: 5"

GROUT: Portland Cement - Type I/II
 Pumped thru casing, displaced to surface with water

COMPLETION Aquifer: UHJ*, MHJ Sands

Static Water Level: Depth 190' Elev: 6739' (avg.)

UNDERREAM: Blade Dia: 10.5"

Intervals: from 410' to 420' / length 10'*

from 429' to 449' / length 20'*

from 465' to 485' / length 20'

SCREEN LINER ASSEMBLY

Description	Depth		Elev.		Length
	From - To	/ From - To	From - To		
K-packer	401'		6528'		
Screen	410'	420'	6519'	6509'	10'*
Screen	429'	449'	6500'	6480'	20'*
Screen	465'	485'	6464'	6444'	20'

SCREEN SPECIFICATIONS:

Slot: 0.020" Composition 3" PVC

FILTER PACKING:

Volume: _____ (bags)(ft³) Sand Specs. _____

Method: N/A

WELL STIMULATION: Method Airlift

Yield: Good / Moderate / Poor

* Worked-over 9/28/10:

New Completion Intervals: 410'-420'

429'-449'

M-114