

M-115

Lost Creek ISR, LLC  
**WELL COMPLETION REPORT**

M-115

WELL # M-115 SEO # 187656 Date Drilled: 7/25/08

Location: E 2,208,879 / N 595,321 (NAD 83)

Ground Elev: 6937.5' Measure Point Elev: 6939.10'

TD: 460' Hole Dia.: 7-7/8"

CASED to: 460' Casing: PVC SDR17 ID: 4.5" OD: 5"

GROUT: Portland Cement - Type I/II  
 Pumped thru casing, displaced to surface with water

COMPLETION Aquifer: MHJ Sand

Static Water Level: Depth 185' Elev: 6753' (avg.)

UNDERREAM: Blade Dia: 11"

Intervals: from 428' to 451' / length 23'  
 from \_\_\_\_\_ to \_\_\_\_\_ / length \_\_\_\_\_

SCREEN LINER ASSEMBLY

Description	Depth		Elev.		Length
	From	To	From	To	
K-packer	421'		6517'		
Screen	428'	451'	6510'	6487'	23'

SCREEN SPECIFICATIONS:

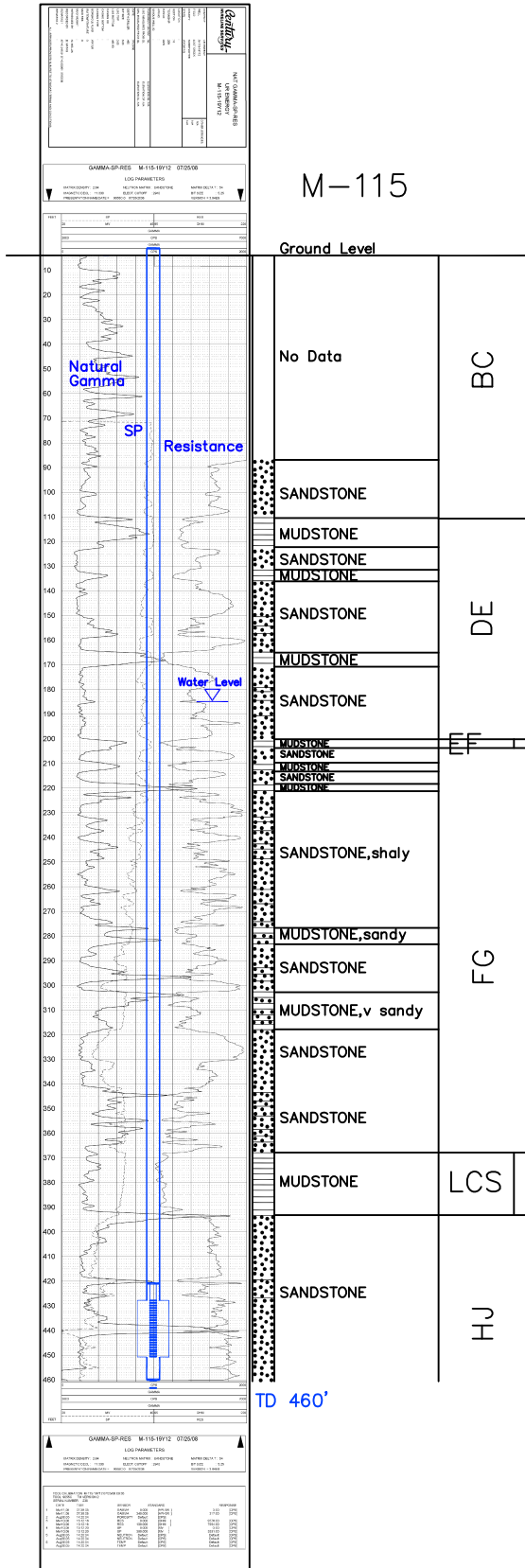
Slot: 0.020" Composition 3" PVC

FILTER PACKING:

Volume: \_\_\_\_\_ (bags)(ft<sup>3</sup>) Sand Specs. \_\_\_\_\_  
 Method: N/A

WELL STIMULATION: Method Airlift

Yield: Good / Moderate / Poor



M-115