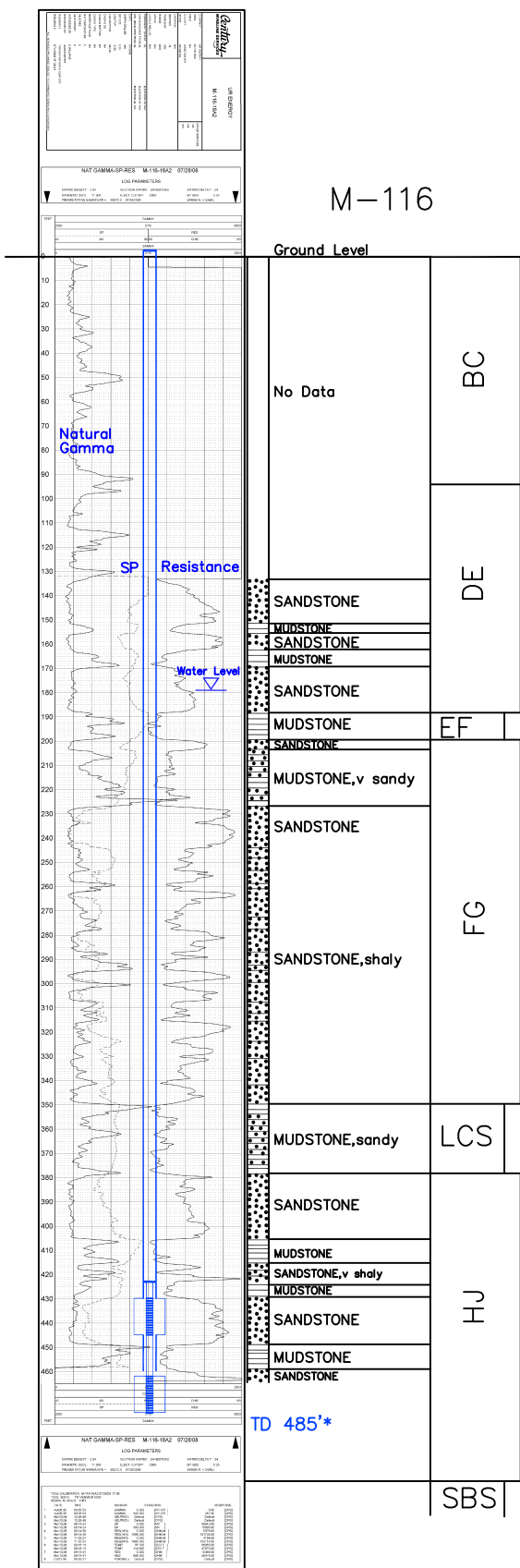


M-116

Lost Creek ISR, LLC  
WELL COMPLETION REPORT

M-116



WELL # M-116 SEO # 187646 Date Drilled: 7/28/08  
 Location: E 2,208,959 / N 595,808 (NAD 83)  
 Ground Elev: 6933.1' Measure Point Elev: 6934.00'  
 TD: 485' ft. Hole Dia.: 7-7/8"  
 CASIED to: 460' Casing: PVC SDR17 ID: 4.5" OD: 5"

GROUT: Portland Cement - Type I/II  
 Pumped thru casing, displaced to surface with water

COMPLETION Aquifer: MHJ, LHJ\* Sands  
 Static Water Level: Depth 179' Elev: 6754' (avg.)

UNDERREAM: Blade Dia: 10.5"  
 Intervals: from 430' to 445' / length 15'  
 from 462' to 477' / length 15'\*

SCREEN LINER ASSEMBLY

Description	Depth		Elev.		Length
	From	To	From	To	
K-packer	423'		6510'		
Screen	430'	445'	6503'	6488'	15'
Screen	462'	477'	6471'	6456'	15'*

SCREEN SPECIFICATIONS:  
 Slot: 0.020" Composition 3" PVC

FILTER PACKING:  
 Volume: \_\_\_\_\_ (bags)(ft<sup>3</sup>) Sand Specs. \_\_\_\_\_  
 Method: N/A

WELL STIMULATION: Method Airlift  
 Yield: Good / Moderate / Poor

\* Worked-over 10/4/10:  
 Deepened 464'-485'  
 New Completion Interval: 462'-477'

M-116