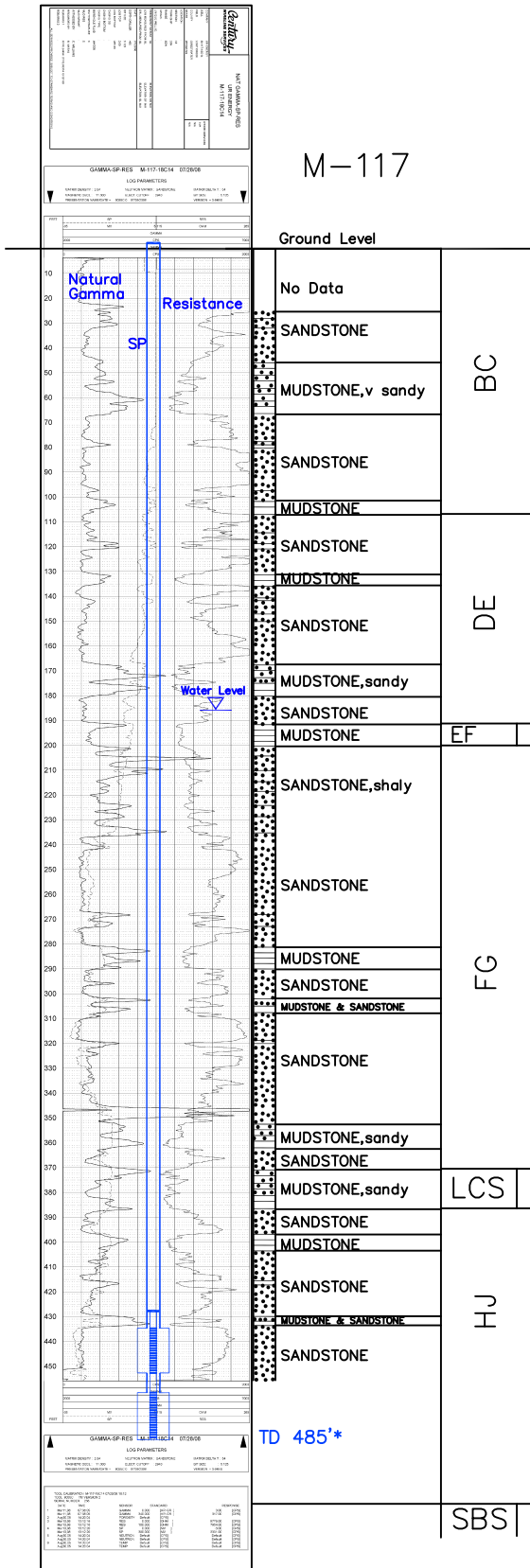


M-117

Lost Creek ISR, LLC
WELL COMPLETION REPORT

M-117



WELL # M-117 SEO # 187647 Date Drilled: 7/28/08

Location: E 2,209,308 / N 596,148 (NAD 83)

Ground Elev: 6943.00' Measure Point Elev: 6944.80'

TD: 485'* Hole Dia.: 7-7/8"

CASED to: 465' Casing: PVC SDR17 ID: 4.5" OD: 5"

GROUT: Portland Cement - Type I/II
 Pumped thru casing, displaced to surface with water

COMPLETION Aquifer: MHJ, LHJ* Sands

Static Water Level: Depth 186' Elev: 6757' (avg.)

UNDERREAM: Blade Dia: 10.5"

Intervals: from 435' to 453' / length 18'
 from 461' to 480' / length 19'*

SCREEN LINER ASSEMBLY

Description	Depth		Elev.		Length
	From - To	/ From - To	From - To		
K-packer	428'		6515'		
Screen	435'	453'	6508'	6490'	18'
Screen	461'	480'	6482'	6463'	19'*

SCREEN SPECIFICATIONS:

Slot: 0.020" Composition 3" PVC

FILTER PACKING:

Volume: _____ (bags)(ft³) Sand Specs. _____
 Method: N/A

WELL STIMULATION: Method Airlift

Yield: Good / Moderate / Poor

* Worked-over 10/5/10:
 Deepened 465'-485'
 New Completion Interval: 461'-480'

M-117