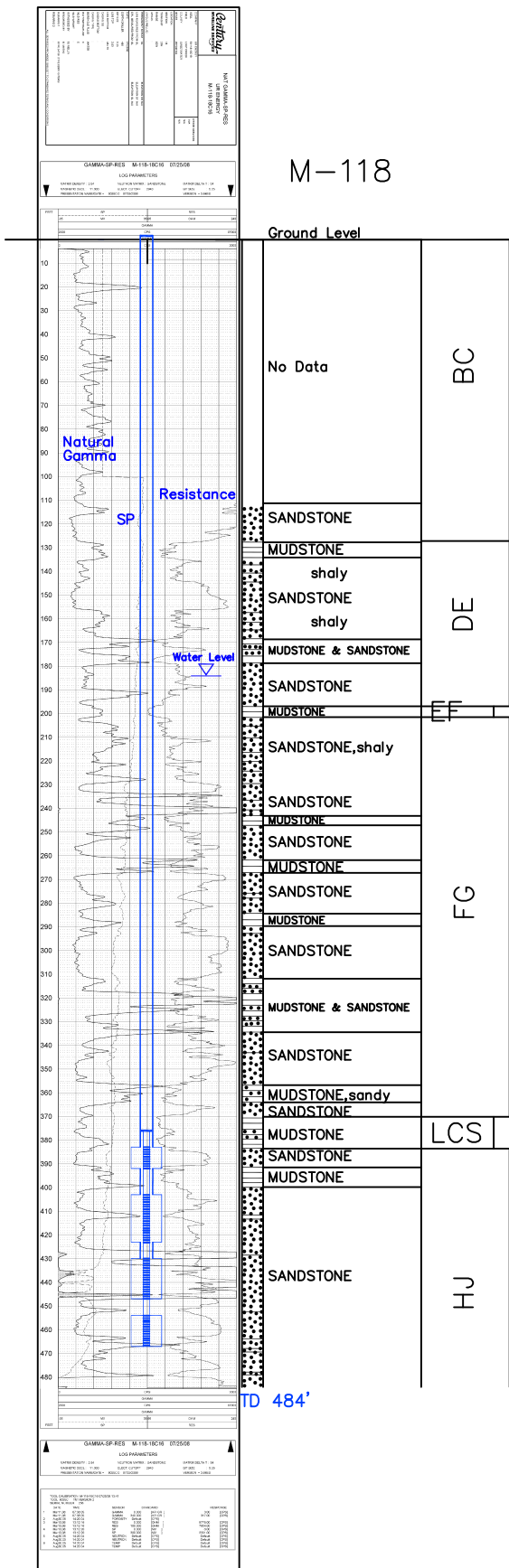


M-118

Lost Creek ISR, LLC
WELL COMPLETION REPORT

M-118



WELL # M-118 SEO # 187647 Date Drilled: 7/25/08

Location: E 2,209,797 / N 596,146 (NAD 83)

Ground Elev: 6944.6' Measure Point Elev: 6945.16'

TD: 484' Hole Dia.: 7-7/8"

CASED to: 430' Casing: PVC SDR17 ID: 4.5" OD: 5"

GROUT: Portland Cement - Type I/II
 Pumped thru casing, displaced to surface with water

COMPLETION Aquifer: UHJ*, MHJ, LHJ Sands
 Static Water Level: Depth 184' Elev: 6761' (avg.)

UNDERREAM: Blade Dia: 10.5"
 Intervals: from 383' to 392' / length 9'*
 from 403' to 423' / length 20'*
 from 430' to 447' / length 17'
 from 454' to 467' / length 13'

SCREEN LINER ASSEMBLY

Description	Depth		Elev.		Length
	From - To	/ From - To	From - To		
K-packer	376'		6569'		
Screen	383'	392'	6562'	6553'	9'*
Screen	403'	423'	6542'	6522'	20'*
Screen	430'	447'	6515'	6498'	17'
Screen	454'	467'	6491'	6478'	13'

SCREEN SPECIFICATIONS:

Slot: 0.020" Composition 3" PVC

FILTER PACKING:

Volume: _____ (bags)(ft³) Sand Specs. _____
 Method: N/A

WELL STIMULATION: Method Airlift

Yield: Good / Moderate / Poor

* Worked-over 9/29/10:
 New Completion Intervals: 383'-392'
403'-423'

M-118