

M-119

Lost Creek ISR, LLC
WELL COMPLETION REPORT

M-119

WELL # M-119 SEO # 187647 Date Drilled: 7/24/08

Location: E 2,210,266 / N 596,303 (NAD 83)

Ground Elev: 6947.9' Measure Point Elev: 6948.65'

TD: 464' Hole Dia.: 7-7/8"

CASED to: 455' Casing: PVC SDR17 ID: 4.5" OD: 5"

GROUT: Portland Cement - Type I/II
 Pumped thru casing, displaced to surface with water

COMPLETION Aquifer: MHJ Sand

Static Water Level: Depth 184' Elev: 6764' (avg.)

UNDERREAM: Blade Dia: 10"

Intervals: from 432' to 450' / length 18'
 from _____ to _____ / length _____

SCREEN LINER ASSEMBLY

| Description | Depth | | Elev. | | Length |
|-------------|-----------|-------------|-------|-------|--------|
| | From - To | / From - To | | | |
| K-packer | 425' | | 6523' | | |
| Screen | 432' | 450' | 6516' | 6498' | 18' |
| | | | | | |
| | | | | | |

SCREEN SPECIFICATIONS:

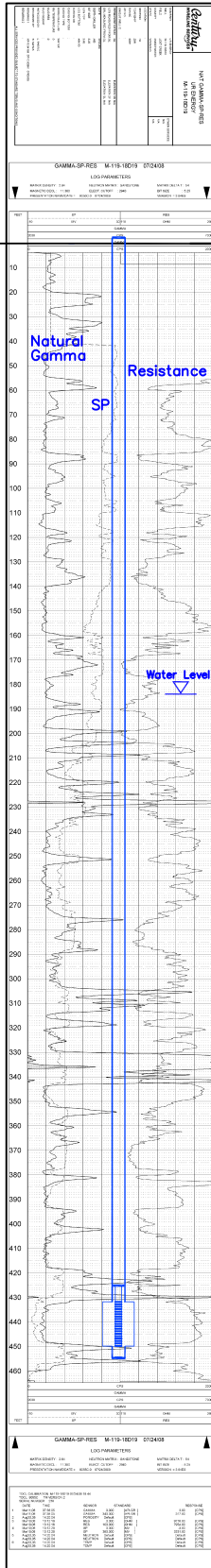
Slot: 0.020" Composition 3" PVC

FILTER PACKING:

Volume: _____ (bags)(ft³) Sand Specs. _____
 Method: N/A

WELL STIMULATION: Method Airlift _____ 6765'

Yield: Good / Moderate / Poor



M-119