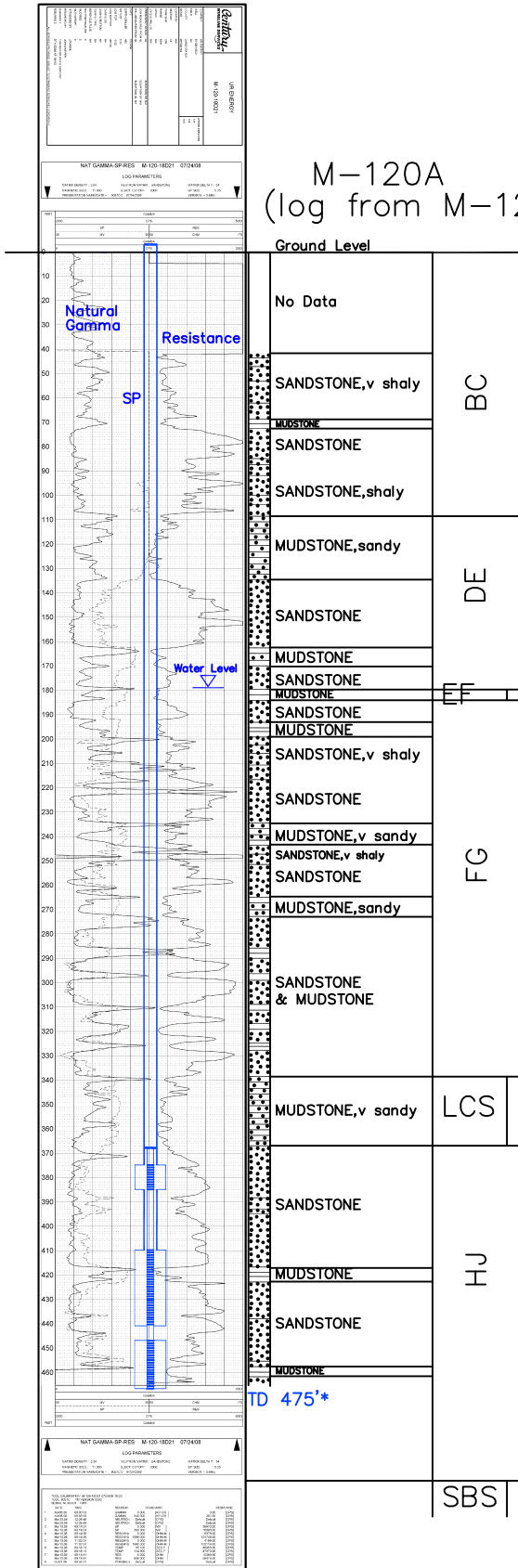


# M-120A

## Lost Creek ISR, LLC WELL COMPLETION REPORT

M-120A  
(log from M-120)



M-120A  
(log from M-120)

WELL # M-120A SEO # 187648 Date Drilled: 3-20-09

Location: E 2,210,727 / N 596,442 (NAD 83)

Ground Elev: 6946.3' Measure Point Elev: 6948.63'

TD: 475'\* Hole Dia.: 7-7/8"

CASED to: 410' Casing: PVC SDR17 ID: 4.5" OD: 5"

GROUT: Portland Cement - Type I/II  
Pumped thru casing, displaced to surface with water

COMPLETION Aquifer: UHJ\*, MHJ, LHJ\* Sands  
Static Water Level: Depth 179' Elev: 6770' (avg.)

UNDERREAM: Blade Dia: 10.5"  
Intervals: from 375' to 385' / length 10'\*  
from 410' to 441' / length 31'  
from 447' to 467' / length 20'\*

### SCREEN LINER ASSEMBLY

Description	Depth		Elev.		
	From	To	From	To	
K-packer	368'		6578'		
Screen	375'	385'	6571'	6561'	10'*
Screen	410'	441'	6536'	6505'	31'
Screen	447'	467'	6499'	6479'	20'*

### SCREEN SPECIFICATIONS:

Slot: 0.020" Composition 3" PVC

### FILTER PACKING:

Volume: \_\_\_\_\_ (bags)(ft<sup>3</sup>) Sand Specs. \_\_\_\_\_  
Method: N/A

WELL STIMULATION: Method Airlift

Yield: Good / Moderate / Poor

M-120A Replaces M-120. Offset 18' to SW.

M-120A Not Logged. Log for M-120 used here for reference.

\* Worked-over 9/30/10:  
Deepened 450'-475'  
New Completion Intervals: 375'-385'  
447'-467'