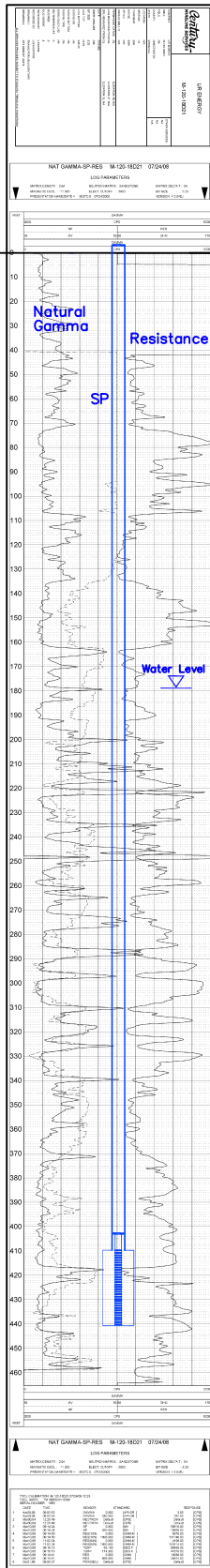


M-120

Lost Creek ISR, LLC

WELL COMPLETION REPORT

M-120



WELL # M-120 SEO # 187648 Date Drilled: 7/24/08

Location: E 2,210,744 / N 596,449 (NAD 83)

Ground Elev: 6945.3' Measure Point Elev: 6946.52'

TD: 464' Hole Dia.: 7-7/8"

CASED to: 410' Casing: PVC SDR17 ID: 4.5" OD: 5"

GROUT: Portland Cement - Type I/II
 Pumped thru casing, displaced to surface with water

COMPLETION Aquifer: MHJ Sand
 Static Water Level: Depth 179' Elev: 6766' (avg.)

UNDERREAM: Blade Dia: 10"
 Intervals: from 410' to 441' / length 31'
 from _____ to _____ / length _____

SCREEN LINER ASSEMBLY

Description	Depth	Elev.	
	From - To	From - To	
K-packer	403'	6542'	
Screen	410' - 441'	6535' - 6504'	31'

SCREEN SPECIFICATIONS:

Slot: 0.020" Composition 3" PVC

FILTER PACKING:

Volume: _____ (bags)(ft³) Sand Specs. _____

Method: N/A

WELL STIMULATION: Method Airlift

Yield: Good / Moderate / Poor

Note: Well failed Mechanical Integrity Test (MIT)
 Plugged and Abandoned w/Thermal Grout 2-11-09
 Replaced by M-120A

M-120