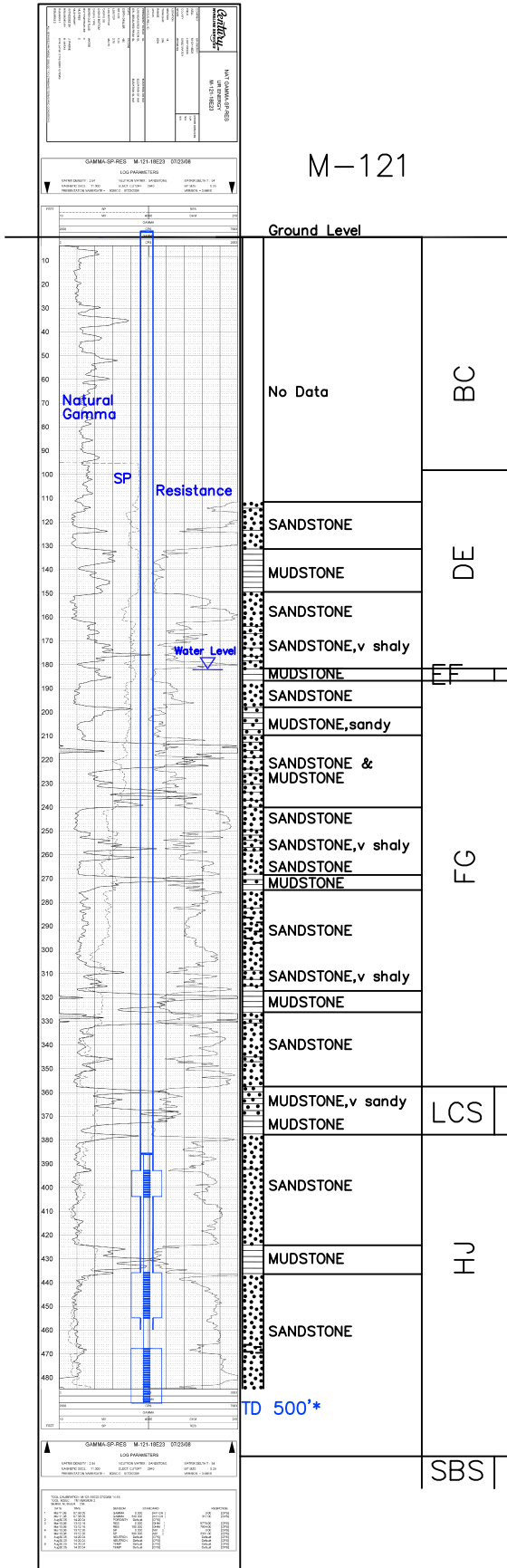


M-121

Lost Creek ISR, LLC  
WELL COMPLETION REPORT

M-121



WELL # M-121 SEO # 187648 Date Drilled: 7/23/08

Location: E 2,211,199 / N 596,595 (NAD 83)

Ground Elev: 6950.6' Measure Point Elev: 6951.71'

TD: 500'\* Hole Dia.: 7-7/8"

CASED to: 460' Casing: PVC SDR17 ID: 4.5" OD: 5"

GROUT: Portland Cement - Type I/II  
 Pumped thru casing, displaced to surface with water

COMPLETION Aquifer: UHJ\*, MHJ, LHJ\* Sands  
 Static Water Level: Depth 182' Elev: 6769' (avg.)

UNDERREAM: Blade Dia: 10.5"  
 Intervals: from 393' to 404' / length 11'\*  
 from 436' to 455' / length 19'  
 from 468' to 491' / length 23'\*

SCREEN LINER ASSEMBLY

Description	Depth		Elev.		Length
	From	To	From	To	
K-packer	386'		6565'		
Screen	393'	404'	6558'	6547'	11'*
Screen	436'	455'	6515'	6496'	19'
Screen	468'	491'	6483'	6460'	23'*

SCREEN SPECIFICATIONS:

Slot: 0.020" Composition 3" PVC

FILTER PACKING:

Volume: \_\_\_\_\_ (bags)(ft<sup>3</sup>) Sand Specs. \_\_\_\_\_

Method: N/A

WELL STIMULATION: Method Airlift

Yield: Good / Moderate / Poor

\* Worked-over 10/6/10:  
 Deepened 484'-500'  
 New Completion Intervals: 393'-404',  
 468'-491'

M-121