

M-122

Lost Creek ISR, LLC
WELL COMPLETION REPORT

M-122

WELL # M-122 SEO # 187649 Date Drilled: 7/22/08

Location: E 2,211,677 / N 596,693 (NAD 83)

Ground Elev: 6951.4' Measure Point Elev: 6952.39'

TD: 495' Hole Dia.: 7-7/8"

CASED to: 495' Casing: PVC SDR17 ID: 4.5" OD: 5"

GROUT: Portland Cement - Type I/II
 Pumped thru casing, displaced to surface with water

COMPLETION Aquifer: MHJ, LHJ Sands

Static Water Level: Depth 181' Elev: 6770' (avg.)

UNDERREAM: Blade Dia: 10"
 Intervals: from 433' to 447' / length 14'
 from 477' to 487' / length 10'

SCREEN LINER ASSEMBLY

Description	Depth		Elev.		Length
	From	To	From	To	
K-packer	425'		6526'		
Screen	433'	447'	6518'	6504'	14'
Screen	477'	487'	6474'	6464'	10'

SCREEN SPECIFICATIONS:

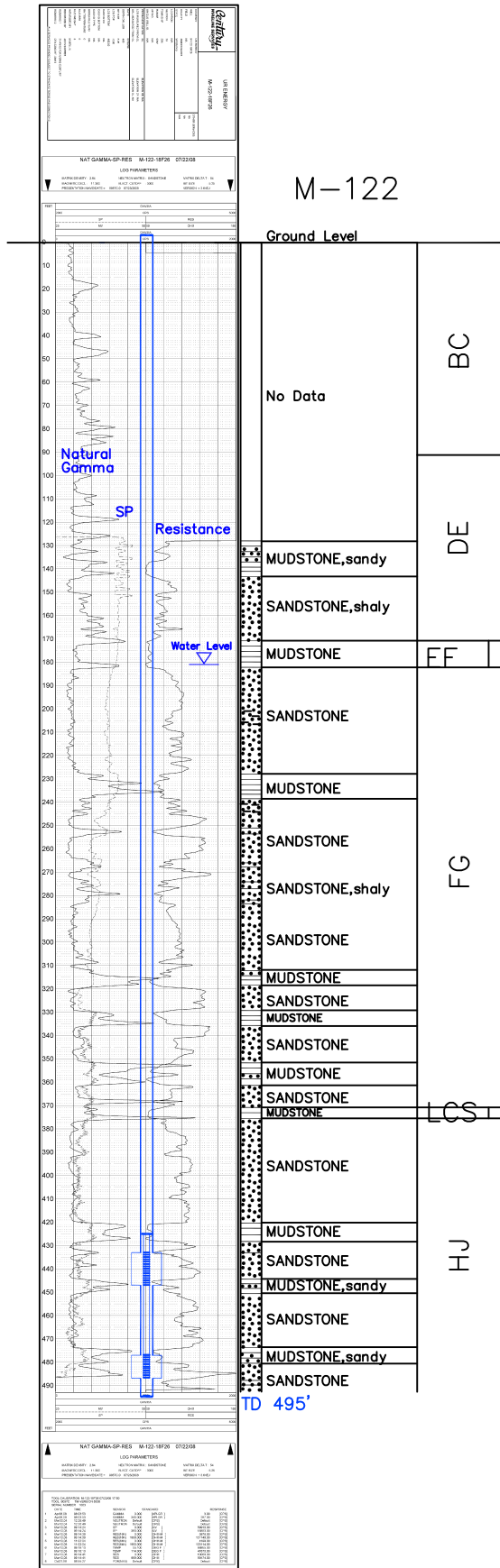
Slot: 0.020" Composition 3" PVC

FILTER PACKING:

Volume: _____ (bags)(ft³) Sand Specs. _____
 Method: N/A

WELL STIMULATION: Method Airlift

Yield Good / Moderate / Poor



M-122