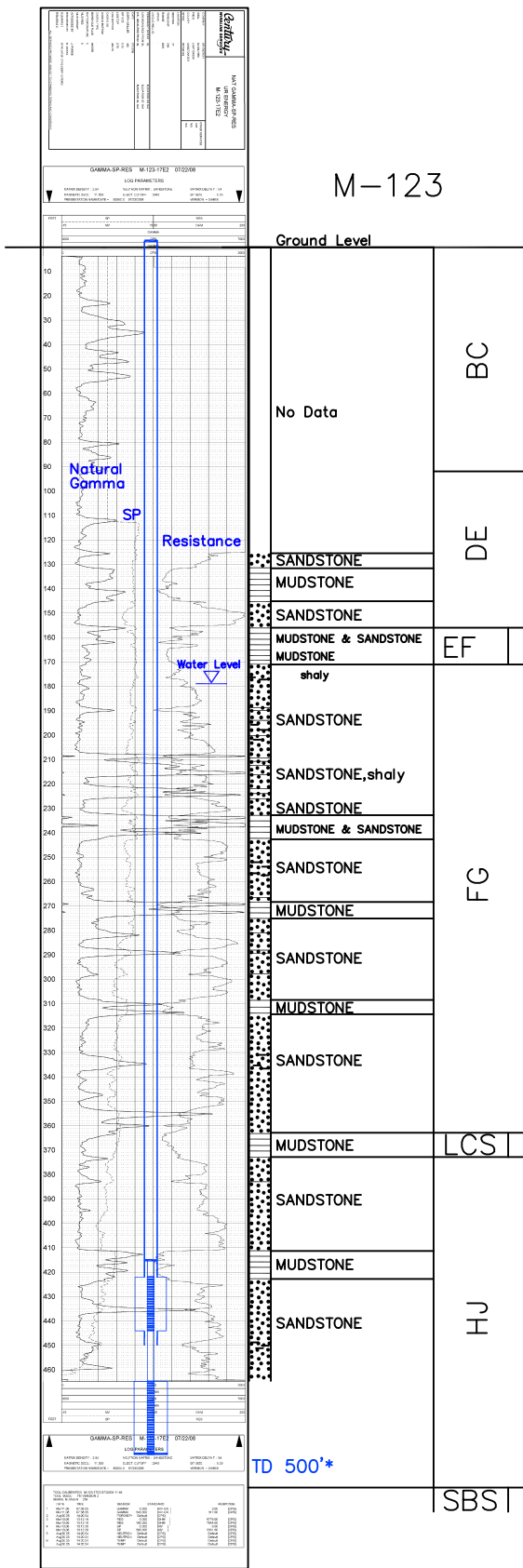


Lost Creek ISR, LLC
WELL COMPLETION REPORT

M-123



WELL # M-123 SEO # 187649 Date Drilled: 7/22/08

Location: E 2,212,166 / N 596,647 (NAD 83)

Ground Elev: 6951.2' Measure Point Elev: 6951.85'

TD: 500'* Hole Dia.: 7-7/8"

CASED to: 450' Casing: PVC SDR17 ID: 4.5" OD: 5"

GROUT: Portland Cement - Type I/II
 Pumped thru casing, displaced to surface with water

COMPLETION Aquifer: MHJ, LHJ* Sand

Static Water Level: Depth 179' Elev: 6772' (avg.)

UNDERREAM: Blade Dia: 10.5"
 Intervals: from 422' to 444' / length 22'
 from 465' to 495' / length 30'*

SCREEN LINER ASSEMBLY

| Description | Depth | | Elev. | | Length |
|-------------|-----------|-------------|-------|-------|--------|
| | From - To | / From - To | | | |
| K-packer | 415' | | 6536' | | |
| Screen | 422' | 444' | 6529' | 6507' | 22' |
| Screen | 465' | 495' | 6486' | 6456' | 30'* |

SCREEN SPECIFICATIONS:

Slot: 0.020" Composition 3" PVC

FILTER PACKING:

Volume: (bags)(ft³) Sand Specs.
 Method: N/A

WELL STIMULATION: Method Airlift

Yield: Good / Moderate / Poor

* Worked-over 10/7/10:
 Deepened 465'-500'
 New Completion Interval: 465'-495'

M-123