

M-125

Lost Creek ISR, LLC
WELL COMPLETION REPORT

M-125

WELL # M-125 SEO # 187650 Date Drilled: 7/21/08

Location: E 2,212,970 / N 596,111 (NAD 83)

Ground Elev: 6947.5' Measure Point Elev: 6947.76

TD: 450' Hole Dia.: 7-7/8"

CASED to: 366' Casing: PVC SDR17 ID: 4.5" OD: 5"

GROUT: Portland Cement - Type I/II
 Pumped thru casing, displaced to surface with water

COMPLETION Aquifer: MHJ, LHJ Sands

Static Water Level: Depth 174' Elev: 6774' (avg.)

UNDERREAM: Blade Dia: 10"

Intervals: from 366' to 397' / length 31'
 from 404' to 419' / length 15'

SCREEN LINER ASSEMBLY

Description	Depth		Elev.		Length
	From	To	From	To	
K-packer	359'		6589'		
Screen	366'	397'	6582'	6551'	31'
Screen	404'	419'	6544'	6529'	15'

SCREEN SPECIFICATIONS:

Slot: 0.020" Composition 3" PVC

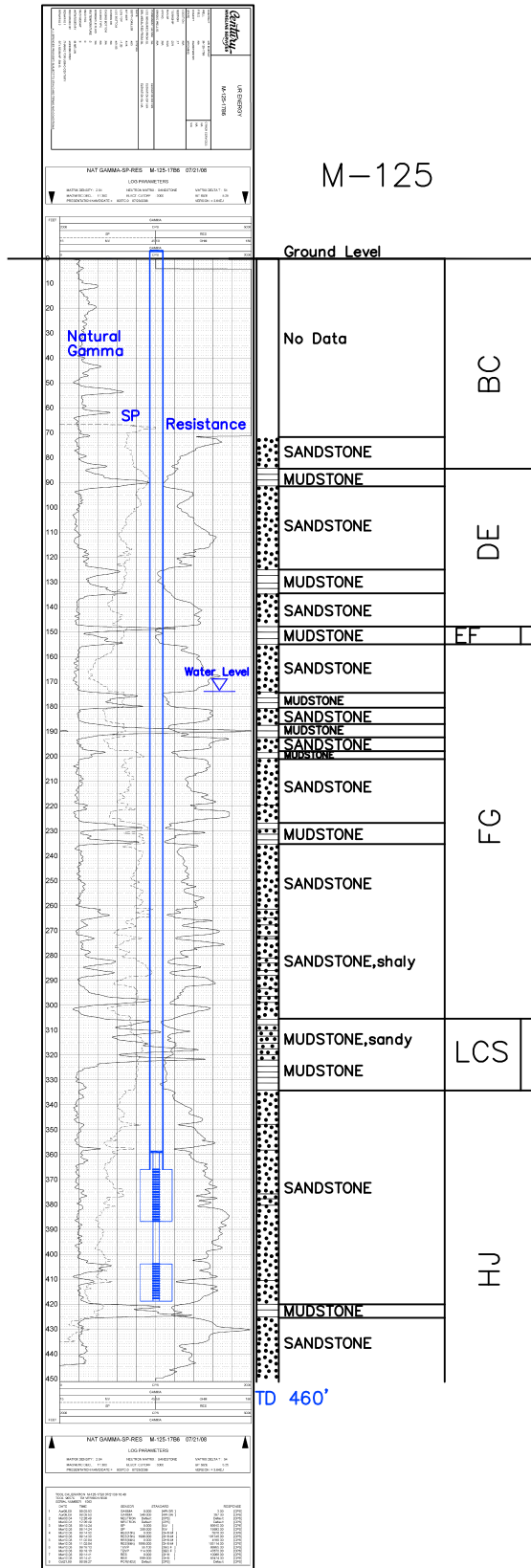
FILTER PACKING:

Volume: _____ (bags)(ft³) Sand Specs. _____

Method: N/A

WELL STIMULATION: Method Airlift

Yield: Good / Moderate / Poor



M-125