

M-126

Lost Creek ISR, LLC
WELL COMPLETION REPORT

M-126

WELL # M-126 SEO # 187650 Date Drilled: 7/22/08

Location: E 2,213,464 / N 596,087 (NAD 83)

Ground Elev: 6948.7' Measure Point Elev: 6949.67'

TD: 420' Hole Dia.: 7-7/8"

CASED to: 331' Casing: PVC SDR17 ID: 4.5" OD: 5"

GROUT: Portland Cement – Type I/II
 Pumped thru casing, displaced to surface with water

COMPLETION Aquifer: UHJ, MHJ Sands

Static Water Level: Depth 175' Elev: 6774' (avg.)

UNDERREAM: Blade Dia: 10"

Intervals: from 331' to 348' /length 17'

from 365' to 401' /length 36'

SCREEN LINER ASSEMBLY

Description	Depth		Elev.		Length
	From	To	From	To	
K-packer	324'		6625'		
Screen	331'	348'	6618'	6601''	17'
Screen	365'	401'	6584'	6548'	36'

SCREEN SPECIFICATIONS:

Slot: 0.020" Composition 3" PVC

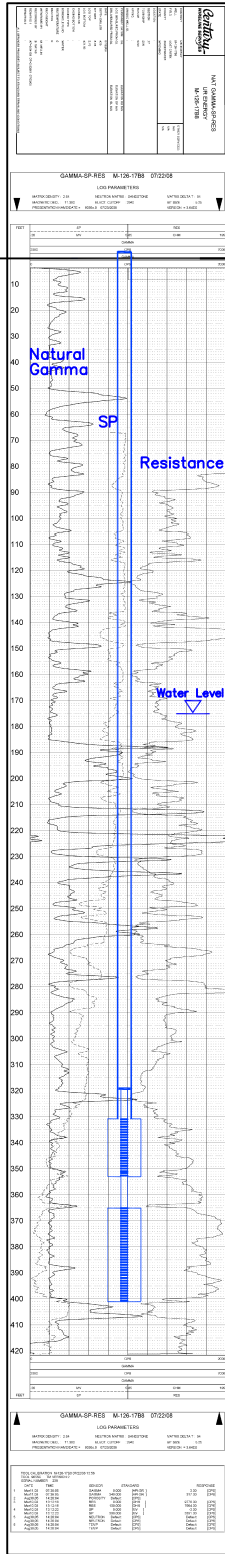
FILTER PACKING:

Volume: _____ (bags)(ft³) Sand Specs. _____

Method: N/A

WELL STIMULATION: Method Airlift

Yield: Good Moderate / Poor



M-126