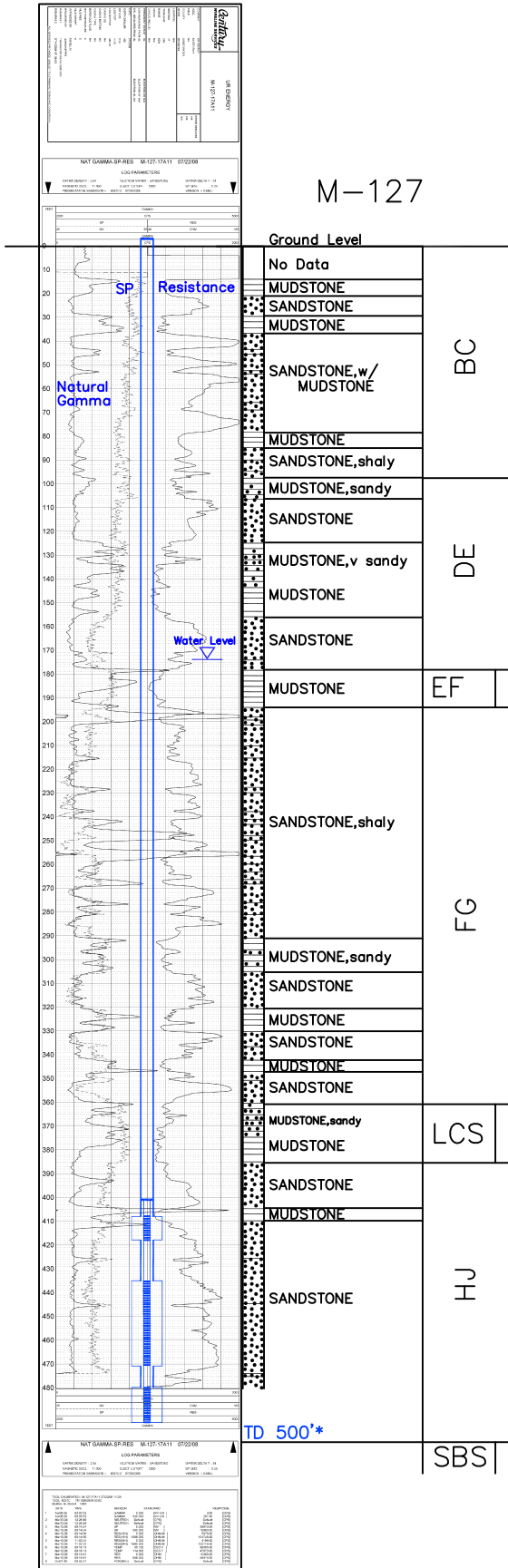


M-127

Lost Creek ISR, LLC  
**WELL COMPLETION REPORT**

M-127



WELL # M-127 SEO # 187651 Date Drilled: 7/22/08

Location: E 2,213,932 / N 595,954 (NAD 83)

Ground Elev: 6946.5' Measure Point Elev: 6947.66'

TD: 500' Hole Dia.: 7-7/8"

CASED to: 480' Casing: PVC SDR17 ID: 4.5" OD: 5"

GROUT: Portland Cement - Type I/II  
 Pumped thru casing, displaced to surface with water

COMPLETION Aquifer: UHJ, MHJ, LHJ\* Sands

Static Water Level: Depth 174' Elev: 6773' (avg.)

UNDERREAM: Blade Dia: 10.5"  
 Intervals: from 408' to 418' / length 10'  
 from 435' to 450' / length 15'\*  
 from 450' to 471' / length 21'  
 from 480' to 495' / length 15'\*

SCREEN LINER ASSEMBLY

Description	Depth		Elev.		Length
	From - To	/ From - To	From - To		
K-packer	401'		6546'		
Screen	408'	418'	6539'	6529'	10'
Screen	435'	471'	6512'	6476'	36'*
Screen	480'	495''	6467'	6452'	15'*

SCREEN SPECIFICATIONS:

Slot: 0.020" Composition 3" PVC

FILTER PACKING:

Volume: \_\_\_\_\_ (bags)(ft<sup>3</sup>) Sand Specs. \_\_\_\_\_  
 Method: N/A

WELL STIMULATION: Method Airlift

Yield: Good / Moderate / Poor

M-127

\* Worked-over 10/12/10:  
 Deepened 480'-500'  
 New Completion Intervals: 435'-450'  
 480'-495'