

M-128

Lost Creek ISR, LLC
WELL COMPLETION REPORT

M-128

WELL # M-128 SEO # 187651 Date Drilled: 7/21/08

Location: E 2,214,350 / N 595,698 (NAD 83)

Ground Elev: 6947.3' Measure Point Elev: 6948.55'

TD: 490'* Hole Dia.: 7-7/8"

CASED to: 455' Casing: PVC SDR17 ID: 4.5" OD: 5"

GROUT: Portland Cement - Type I/II
 Pumped thru casing, displaced to surface with water

COMPLETION Aquifer: UHJ*, MHJ, LHJ* Sands

Static Water Level: Depth 175' Elev: 6772' (avg.)

UNDERREAM: Blade Dia: 10.5"

Intervals: from 382' to 394' / length 12'*

from 427' to 446' / length 19'

from 458' to 485' / length 27'*

SCREEN LINER ASSEMBLY

Description	Depth		Elev.		Length
	From - To		From - To		
K-packer	375'		6572'		
Screen	382'	394'	6565'	6553'	12'*
Screen	427'	446'	6520'	6501'	19'
Screen	458'	485'	6489'	6462'	27'*

SCREEN SPECIFICATIONS:

Slot: 0.020" Composition 3" PVC

FILTER PACKING:

Volume: _____ (bags)(ft³) Sand Specs. _____

Method: N/A

WELL STIMULATION: Method Airlift

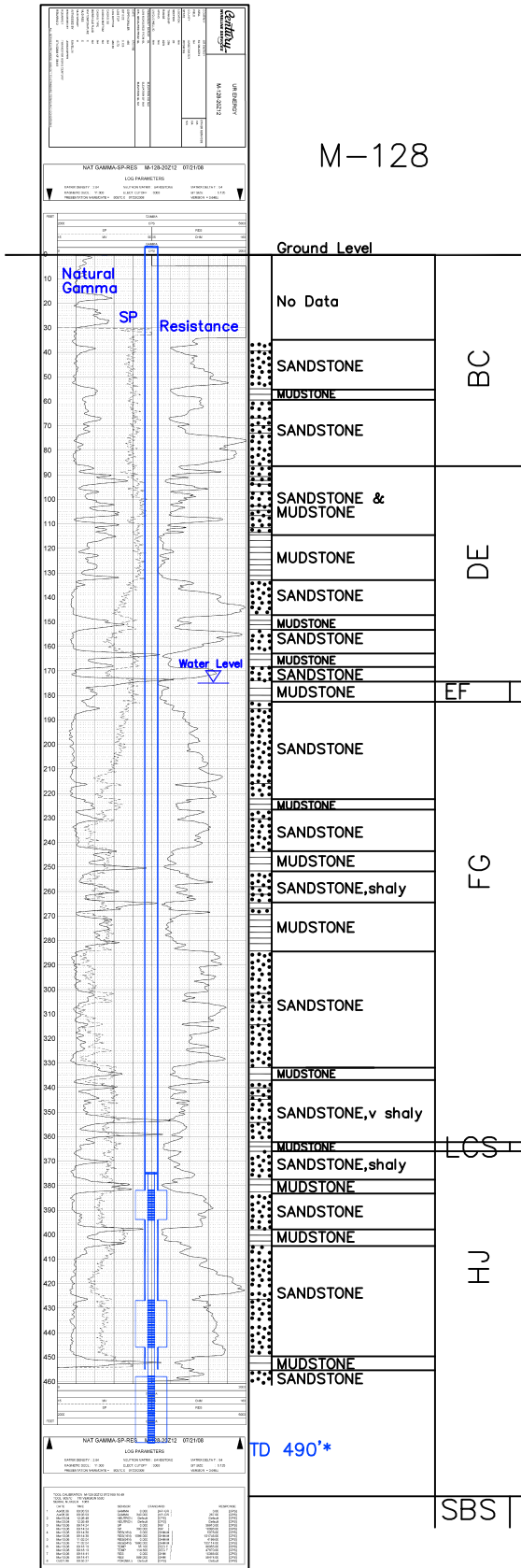
Yield: Good / Moderate / Poor

* Worked-over 10-12-10:

Deepened 460'-490'

New Completion Intervals: 382'-394'

458'-485'



M-128