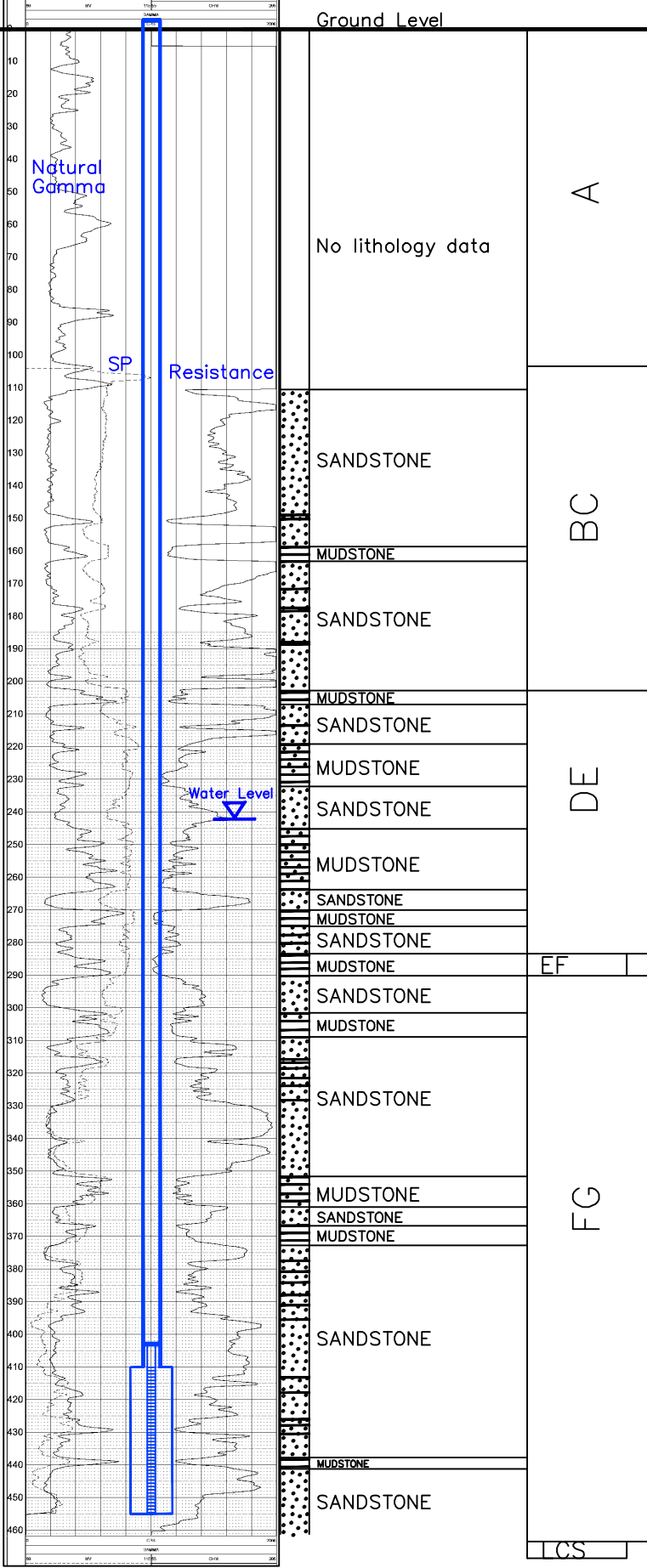


**Geotek**  
 MB-02-18E17  
 LIT ENERGY

NAT GAMMA-SPARES MS-2-13E17 1007/08  
 LOG PARAMETERS  
 MATRICELECTRICITY 244  
 MATRICELECTRICITY 244  
 MATRICELECTRICITY 244

MB-02

Lost Creek ISR, LLC  
 WELL COMPLETION REPORT



WELL # MB-02 SEO # 188853 Date Drilled: 10-7-08  
 Location: E 736,298 / N 535,858 (NAD 27)  
 Ground Elev: 6985.42' Measure Point Elev: 6986.92'  
 TD: 460' Hole Dia.: 7-7/8"  
 CASED to: 410' Casing: PVC SDR17 ID: 4.5" OD: 5"  
 GROUT: Portland Cement - Type I/II  
 Pumped thru casing, displaced to surface with water  
 COMPLETION Aquifer: LFG Sand  
 Static Water Level: Depth 242' Elev: 6745' (avg.)

UNDERREAM: Blade Dia: 10.5"  
 Intervals: from 410' to 450' / length 40'  
 from \_\_\_\_\_ to \_\_\_\_\_ / length \_\_\_\_\_

SCREEN LINER ASSEMBLY

Description	Depth	Elev.	Length
	From - To	/ From - To	
K-packer	403'	6584'	
Screen	410' - 450'	6577' - 6537'	40'

SCREEN SPECIFICATIONS:  
 Slot: 0.020" Composition 3" PVC

FILTER PACKING:  
 Volume: \_\_\_\_\_ (bags)(ft<sup>3</sup>) Sand Specs. \_\_\_\_\_  
 Method: N/A

WELL STIMULATION: Method Airlift  
 Yield: Good / Moderate / Poor

Vertical Scale: 1"=50'