

MO-101

Lost Creek ISR, LLC

WELL COMPLETION REPORT

MO-101

WELL # MO-101 SEO # 187661 Date Drilled: 7/31/08

Location: E 2,213,870 / N 595,207 (NAD 83)

Ground Elev: 6938.5' Measure Point Elev: 6940.24'

TD: 350' Hole Dia.: 7-7/8"

CASED to: 310' Casing: PVC SDR17 ID: 4.5" OD: 5"

GROUT: Portland Cement - Type I/II
 Pumped thru casing, displaced to surface with water

COMPLETION Aquifer: LFG Sand

Static Water Level: Depth 158' Elev: 6781' (avg.)

UNDERREAM: Blade Dia: 10"

Intervals: from 310' to 340' / length 30'
 from _____ to _____ / length _____

SCREEN LINER ASSEMBLY

Description	Depth		Elev.		Length
	From - To	/ From - To	From - To		
K-packer	303'		6636'		30'
Screen	310'	340'	6629'	6599'	30'

SCREEN SPECIFICATIONS:

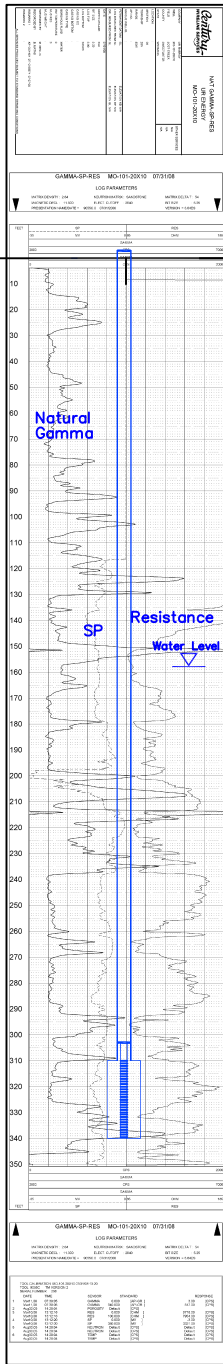
Slot: 0.020" Composition 3" PVC

FILTER PACKING:

Volume: _____ (bags)(ft³) Sand Specs. _____
 Method: N/A

WELL STIMULATION: Method Airlift

Yield: Good / Moderate Poor



MO-101