

# HJMO-112 (MO-103)

## Lost Creek ISR, LLC WELL COMPLETION REPORT

WELL # HJMO-112 SEO # 179898 Date Drilled: 7-17-07

Location: E 744,375 / N 534,674 (NAD 27)

Ground Elev: 6934.76' Measure Point Elev: 6935.51'

TD: 355' Hole Dia.: 7-7/8"

CASED to: 305' Casing: PVC SDR17 ID: 4.5" OD: 5"

GROUT: Portland Cement - Type I/II  
Pumped thru casing, displaced to surface with water

COMPLETION Aquifer: LFG Sand

Static Water Level: Depth 157' Elev: 6679' (avg.)

UNDERREAM: Blade Dia: 10.5"

Intervals: from 305' to 350' / length 45'

from \_\_\_\_\_ to \_\_\_\_\_ / length \_\_\_\_\_

### SCREEN LINER ASSEMBLY

Description	Depth	Elev.	Length
	From - To	/ From - To	
K-packer	292'	6644'	
Screen	305' - 355'	6631' - 6581'	50'

### SCREEN SPECIFICATIONS:

Slot: 0.030" Composition 3" PVC

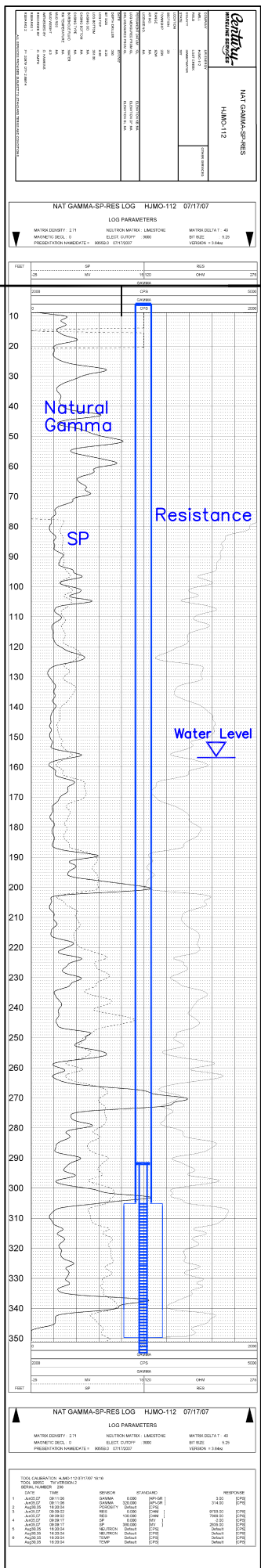
### FILTER PACKING:

Volume: \_\_\_\_\_ (bags)(ft<sup>3</sup>) Sand Specs. \_\_\_\_\_

Method: N/A

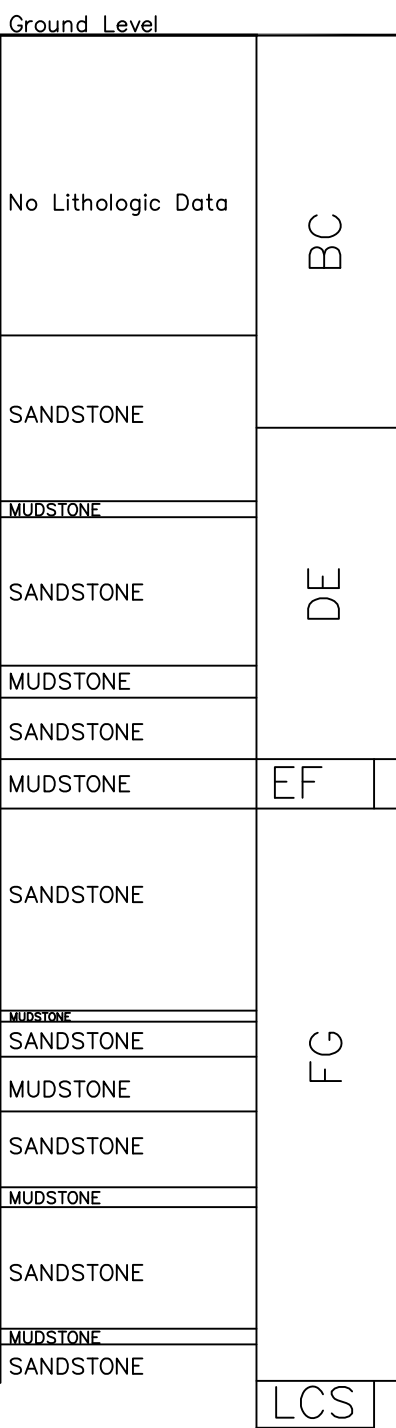
WELL STIMULATION: Method Airlift

Yield: Good / Moderate / Poor



Vertical Scale: 1"=50'

HJMO-112  
(MO-103)



HJMO-112  
(MO-103)