

# HJMO-107 (MO-104)

## HJMO-107 (MO-104)

## Lost Creek ISR, LLC WELL COMPLETION REPORT

WELL # HJMO-107 SEO # 179883 Date Drilled: 07-25-07

Location: E 743,697 / N 534,790 (NAD 27)

Ground Elev: 6936.86 Measure Point Elev: 6937.86

TD: 370 ft. Hole Dia.: 7-7/8"

CASED to: 339' Casing: PVC SDR17 ID: 4.5" OD: 5"

GROUT: Portland Cement - Type I/II  
Pumped thru casing, displaced to surface with water

COMPLETION Aquifer: LFG Sand

Static Water Level: Depth 163' Elev: 6775' (avg.)

UNDERREAM: Blade Dia: 10-1/2"

Intervals: from 339' to 369' / length 30'  
from \_\_\_\_\_ to \_\_\_\_\_ / length \_\_\_\_\_

### SCREEN LINER ASSEMBLY

Description	Depth		Elev.		Length
	From - To	/ From - To	From - To	/ From - To	
K-packer	327'		6611'		
Screen	339' - 369'		6599' - 6569'		30'

### SCREEN SPECIFICATIONS:

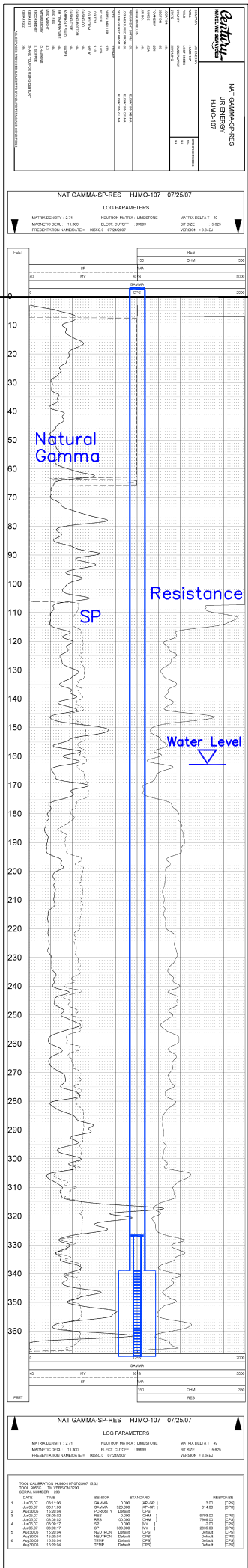
Slot: 0.030" Composition 3" PVC

### FILTER PACKING:

Volume: \_\_\_\_\_ (bags)(ft<sup>3</sup>) Sand Specs. \_\_\_\_\_  
Method: N/A

WELL STIMULATION: Method Airlift

Yield: Good / Moderate / Poor



Vertical Scale: 1"=50'

HJMO-107  
(MO-104)