

HJMO-111 (MO-105)

Lost Creek ISR, LLC WELL COMPLETION REPORT

WELL # HJMO-111 SEO # 179895 Date Drilled: 7-11-07

Location: E 743,825 / N 535,371 (NAD 27)

Ground Elev: 6949.38' Measure Point Elev: 6950.46'

TD: 333 ft. Hole Dia.: 7-7/8"

CASED to: 303' Casing: PVC SDR17 ID: 4.5" OD: 5"

GROUT: Portland Cement – Type I/II
Pumped thru casing, displaced to surface with water

COMPLETION Aquifer: LFG Sand

Static Water Level: Depth 166' Elev: 6784' (avg.)

UNDERREAM: Blade Dia: 10-1/2"

Intervals: from 303' to 333' / length 30'
from _____ to _____ / length _____

SCREEN LINER ASSEMBLY

Description	Depth	Elev.	Length
	From – To	/ From – To	
K-packer	288'	6661'	
Screen	303' – 333'	6646' – 6616'	30'

SCREEN SPECIFICATIONS:

Slot: 0.030" Composition 3" PVC

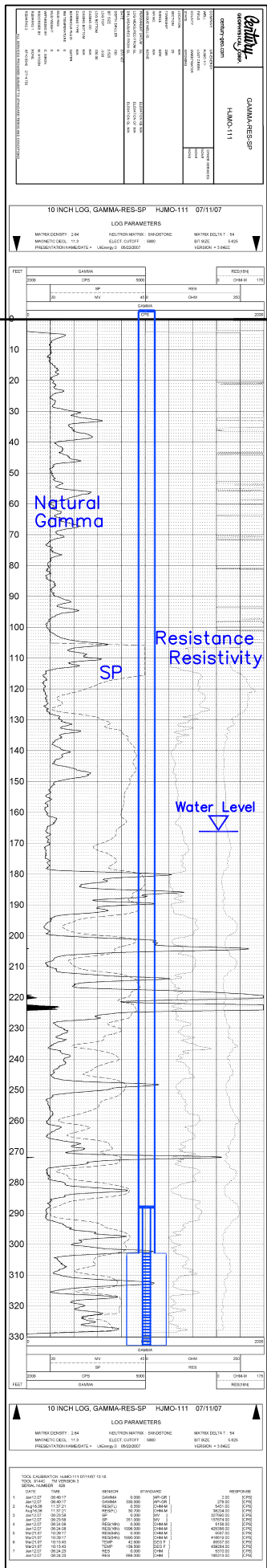
FILTER PACKING:

Volume: _____ (bags)(ft³) Sand Specs. _____

Method: N/A

WELL STIMULATION: Method Airlift

Yield: Good / Moderate / Poor



Vertical Scale: 1"=50'

HJMO-111 (MO-105)

Ground Level

No Lithology Data	BC
SANDSTONE	DE
MUDSTONE	
SANDSTONE	
MUDSTONE	EF
SANDSTONE	FG
MUDSTONE	
SANDSTONE, sandy	
SANDSTONE, shaley	
MUDSTONE	
SANDSTONE	
MUDSTONE, sandy	
SANDSTONE	LCS
MUDSTONE, v. sandy	

HJMO-111 (MO-105)