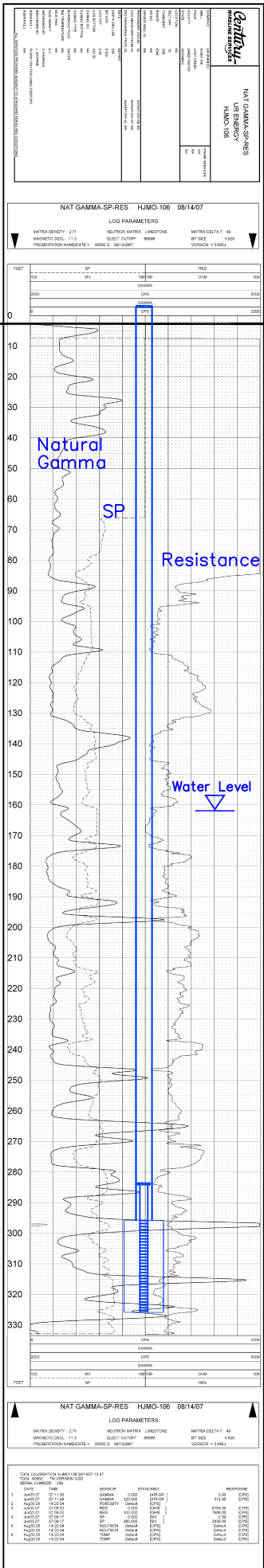


HJMO-106
(MO-106)

Lost Creek ISR, LLC
WELL COMPLETION REPORT



HJMO-106
(MO-106)

WELL # HJMO-106 SEO # 179880 Date Drilled: 8-14-07
 Location: E 743,168 / N 535,258 (NAD 27)
 Ground Elev: 6941.00' Measure Point Elev: 6941.75'
 TD: 336' Hole Dia.: 7-7/8"
 CASED to: 296' Casing: PVC SDR17 ID: 4.5" OD: 5"
 GROUT: Portland Cement - Type I/II
 Pumped thru casing, displaced to surface with water
 COMPLETION Aquifer: LFG Sand
 Static Water Level: Depth 162' Elev: 6780' (avg.)

UNDERREAM: Blade Dia: 10.5"
 Intervals: from 296' to 326' / length 30'
 from _____ to _____ / length _____

SCREEN LINER ASSEMBLY

Description	Depth	Elev.	Length
	From - To	/ From - To	
K-packer	284'	6657'	
Screen	296' - 326'	6645' - 6615'	30'

SCREEN SPECIFICATIONS:
 Slot: 0.030" Composition 3" PVC

FILTER PACKING:
 _____ (bags)(ft³) Sand Specs. _____
 Method: N/A

WELL STIMULATION: Method Airlift
 Yield: Good / Moderate / Poor

HJMO-106
(MO-106)

Vertical Scale: 1"=50'