

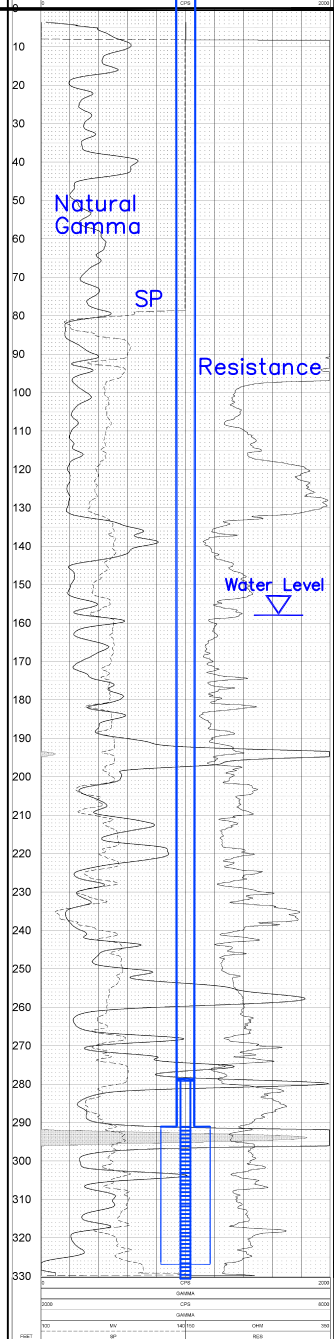
HJMO-103 (MO-107)

Lost Creek ISR, LLC WELL COMPLETION REPORT

CENTURY LOGGING SERVICES	
NAT GAMMA-SP-RES HJMO-103	
LOG PARAMETERS	
MATR DENSITY: 2.71	MATR DENSITY: 2.71
MATR DENS: 11.3	MATR DENS: 11.3
PHOTON ATTEN: 0.0862	PHOTON ATTEN: 0.0862
LOG DATE: 08/02/07	LOG TIME: 10:00
LOG BY: J. B. BROWN	LOG BY: J. B. BROWN

HJMO-103 (MO-107)

NAT GAMMA-SP-RES HJMO-103 08/02/07	
LOG PARAMETERS	
MATR DENSITY: 2.71	MATR DENSITY: 2.71
MATR DENS: 11.3	MATR DENS: 11.3
PHOTON ATTEN: 0.0862	PHOTON ATTEN: 0.0862
LOG DATE: 08/02/07	LOG TIME: 10:00
LOG BY: J. B. BROWN	LOG BY: J. B. BROWN



Vertical Scale: 1"=50'

0 - 85	No Lithology Data	BC
85 - 90	MUDSTONE	DE
90 - 100	SANDSTONE	
100 - 110	MUDSTONE	
110 - 120	SANDSTONE	
120 - 130	MUDSTONE	EF
130 - 140	SANDSTONE	
140 - 150	MUDSTONE	FC
150 - 160	MUDSTONE, sandy	
160 - 170	SANDSTONE	
170 - 180	MUDSTONE	
180 - 190	SANDSTONE, shaley	
190 - 200	MUDSTONE, sandy	
200 - 210	SANDSTONE	LCS
210 - 220	MUDSTONE	
220 - 230	SANDSTONE, shaley	
230 - 240	MUDSTONE, sandy	LCS
240 - 250	SANDSTONE	
250 - 260	MUDSTONE	
260 - 270	SANDSTONE	LCS
270 - 280	MUDSTONE	
280 - 290	SANDSTONE	
290 - 300	MUDSTONE	LCS
300 - 310	SANDSTONE	
310 - 320	MUDSTONE	
320 - 330	MUDSTONE	LCS
330 - 340	SANDSTONE	
340 - 350	MUDSTONE	

WELL # HJMO-103 SEO # 179871 Date Drilled: 08-02-07
 Location: E 742,646 / N 535,101 (NAD 27)
 Ground Elev: 6936.29 Measure Point Elev: 6936.29
 TD: 331 ft. Hole Dia.: 7-7/8"
 CASED to: 291' Casing: PVC SDR17 ID: 4.5" OD: 5"
 GROUT: Portland Cement - Type I/II
 Pumped thru casing, displaced to surface with water
 COMPLETION Aquifer: FG Sand
 Static Water Level: Depth 158' Elev: 6778' (avg.)

UNDERREAM: Blade Dia: 10-1/2"
 Intervals: from 291' to 327' /length 36'
 from _____ to _____ /length _____

SCREEN LINER ASSEMBLY				
Description	Depth	Elev.	Length	
	From - To	/ From - To		
K-packer	279'	6657'		
Screen	291' - 331'	6645' - 6605'	40'	

SCREEN SPECIFICATIONS:
 Slot: 0.030" Composition 3" PVC

FILTER PACKING:
 Volume: _____ (bags)(ft³) Sand Specs. _____
 Method: N/A

WELL STIMULATION: Method Airlift
 Yield: Good / Moderate / Poor

HJMO-103 (MO-107)