

HJMO-102 (MO-108)

Lost Creek ISR, LLC WELL COMPLETION REPORT

HJMO-102 (MO-108)

WELL # HJMO-102 SEO # 179868 Date Drilled: 8-3-07

Location: E 742,549 / N 534,762 (NAD 27)

Ground Elev: 6934.56 Measure Point Elev: 6934.56

TD: 330' Hole Dia.: 7-7/8"

CASED to: 290' Casing: PVC SDR17 ID: 4.5" OD: 5"

GROUT: Portland Cement - Type I/II
Pumped thru casing, displaced to surface with water

COMPLETION Aquifer: FG Sand

Static Water Level: Depth 156' Elev: 6778' (avg)

UNDERREAM: Blade Dia: 10.5"

Intervals: from 290' to 330' / length 40'

from _____ to _____ / length _____

SCREEN LINER ASSEMBLY

| Description | Depth | | Elev. | | Length |
|-------------|-------|------|-------|-------|--------|
| | From | To | From | To | |
| K-packer | | 278' | | 6657' | |
| Screen | 290' | 330' | 6645' | 6605' | 40' |
| | | | | | |
| | | | | | |

SCREEN SPECIFICATIONS:

Slot: 0.030" Composition 3" PVC

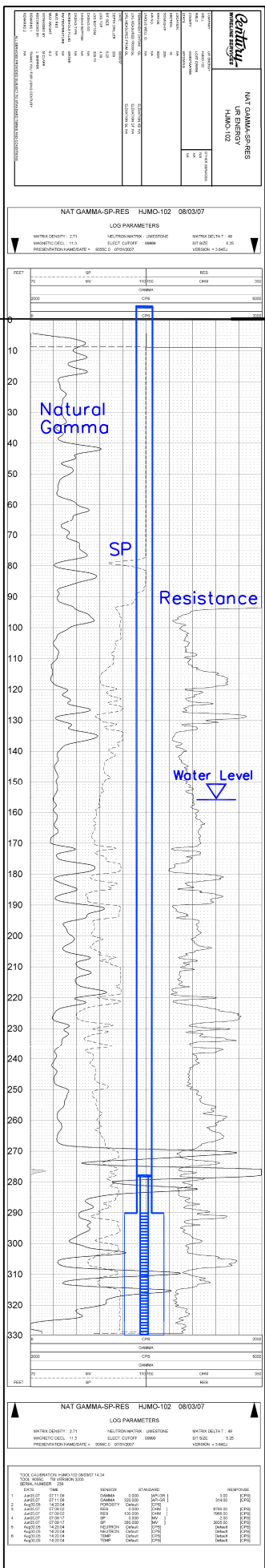
FILTER PACKING:

Volume: _____ (bags)(ft³) Sand Specs. _____

Method: N/A

WELL STIMULATION: Method Airlift

Yield: Good / Moderate / Poor



Vertical Scale: 1"=50'

HJMO-102 (MO-108)