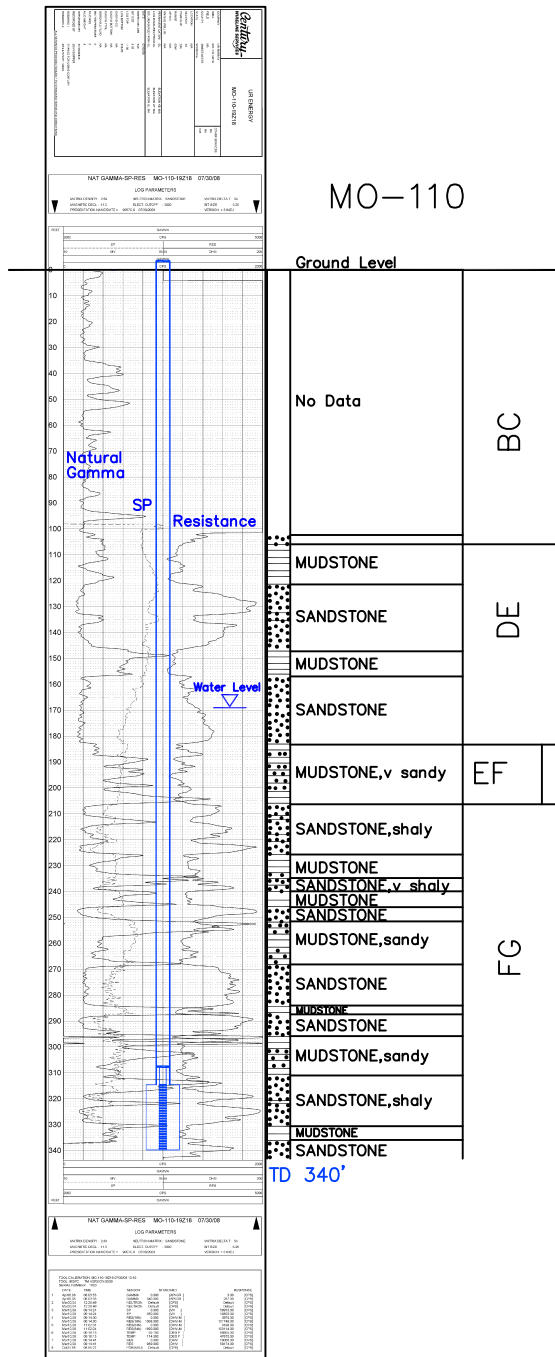


MO-110

Lost Creek ISR, LLC  
WELL COMPLETION REPORT

MO-110



WELL # MO-110 SEO # 187658 Date Drilled: 7/30/08

Location: E 2,210,183 / N 595,637 (NAD 83)

Ground Elev: 6937.4' Measure Point Elev: 6938.39'

TD: 340' Hole Dia.: 7-7/8"

CASED to: 315' Casing: PVC SDR17 ID: 4.5" OD: 5"

GROUT: Portland Cement - Type I/II  
 Pumped thru casing, displaced to surface with water

COMPLETION Aquifer: LFG Sand

Static Water Level: Depth 169' Elev: 6768' (avg.)

UNDERREAM: Blade Dia: 10"  
 Intervals: from 315' to 340' / length 25'  
 from \_\_\_\_\_ to \_\_\_\_\_ / length \_\_\_\_\_

SCREEN LINER ASSEMBLY

Description	Depth		Elev.	Length
	From - To	/ From - To		
K-packer	308'		6629'	
Screen	315'	340'	6622'	6597'
				25'

SCREEN SPECIFICATIONS:

Slot: 0.020" Composition 3" PVC

FILTER PACKING:

Volume: \_\_\_\_\_ (bags)(ft<sup>3</sup>) Sand Specs. \_\_\_\_\_  
 Method: N/A

WELL STIMULATION: Method Airlift

Yield: Good / Moderate / Poor

MO-110