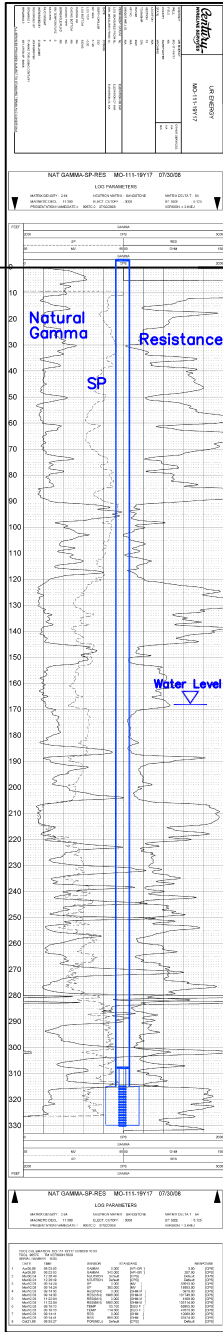


MO-111

Lost Creek ISR, LLC

WELL COMPLETION REPORT

MO-111



WELL # MO-111 SEO # 187658 Date Drilled: 7/30/08

Location: E 2,209,938 / N 595,367 (NAD 83)

Ground Elev: 6936.0 Measure Point Elev: 6936.70'

TD: 330' Hole Dia.: 7-7/8"

CASED to: 315' Casing: PVC SDR17 ID: 4.5" OD: 5"

GROUT: Portland Cement – Type I/II
Pumped thru casing, displaced to surface with water

COMPLETION Aquifer: LFG Sand

Static Water Level: Depth 168' Elev: 6768' (avg.)

UNDERREAM: Blade Dia: 10"

Intervals: from 315' to 330' / length 15'
from _____ to _____ / length _____

SCREEN LINER ASSEMBLY

Description	Depth		Elev.		Length
	From	To	From	To	
K-packer	308'		6628'		
Screen	315'	330'	6621'	6606'	15'

SCREEN SPECIFICATIONS:

Slot: 0.020" Composition 3" PVC

FILTER PACKING:

Volume: _____ (bags)(ft³) Sand Specs. _____

Method: N/A

WELL STIMULATION: Method Airlift

Yield: Good / Moderate Poor

MO-111