

Lost Creek ISR, LLC  
**WELL COMPLETION REPORT**

MO-114  
 (UKMU-101)

WELL # MO-114 SEO # 179905 Date Drilled: 5/10/07

Location: E 2,212,424 / N 595,644 (NAD 83)

Ground Elev: 6939.87 Measure Point Elev: 6941.87

TD: 850 ft. Hole Dia.: 7-7/8"

CASED to: 608' Casing: PVC SDR17 ID: 4.5" OD: 5"

GROUT: Portland Cement - Type I/II  
 Pumped thru casing, displaced to surface with water

COMPLETION Aquifer: LFG Sand

Static Water Level: Depth No Record Elev: \_\_\_\_\_ (avg.)

UNDERREAM: Blade Dia: 10"

Intervals: from 366' to 386' / length 20'

from 608' to 630' / length 22' (back-plugged)

**SCREEN LINER ASSEMBLY**

Description	Depth		Elev.		Length
	From	To	From	To	
K-packer	359'		6581'		
Screen	366'	386'	6574'	6554'	20'

**SCREEN SPECIFICATIONS:**

Slot: 0.020" Composition 3" PVC

**FILTER PACKING:**

Volume: \_\_\_\_\_ (bags)(ft<sup>3</sup>) Sand Specs. \_\_\_\_\_

Method: N/A

WELL STIMULATION: Method Airlift

Yield: Good / Moderate / Poor

Pilot Hole BACKPLUGGED: 630'-850'

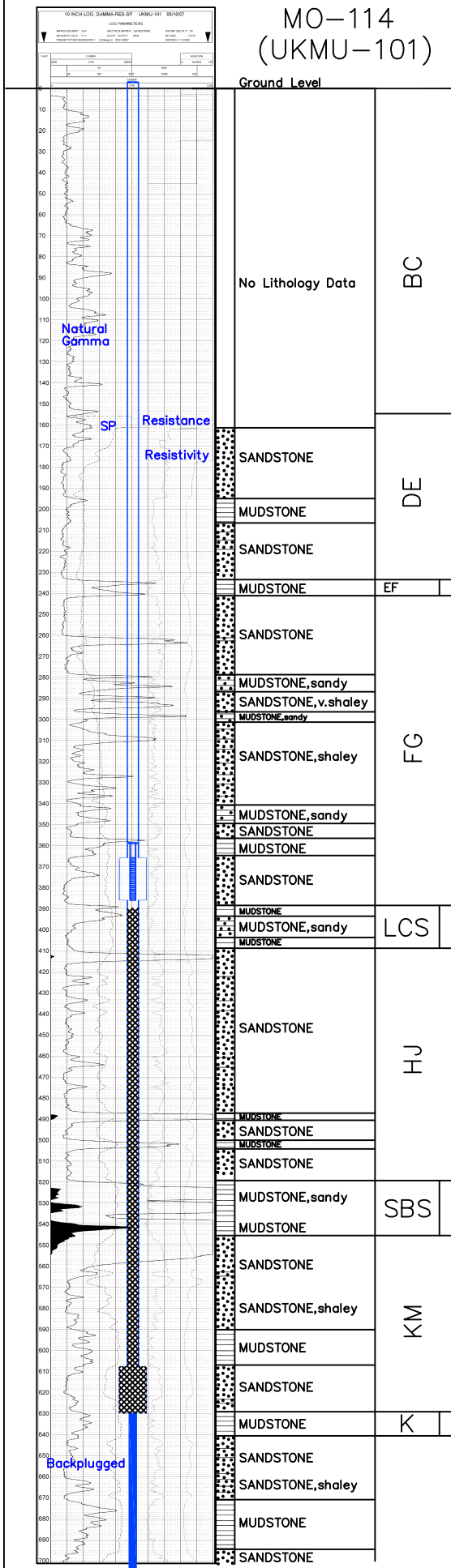
w/ BH Ultragrout slurry - 25% solids

RECOMPLETED: 11/3/08 to monitor LFG

Backplugged: 390'-630' w/ Neat Cement

Underreamed with current completion interval

Renamed as MO-114



TD 850

MO-114  
 (UKMU-101)