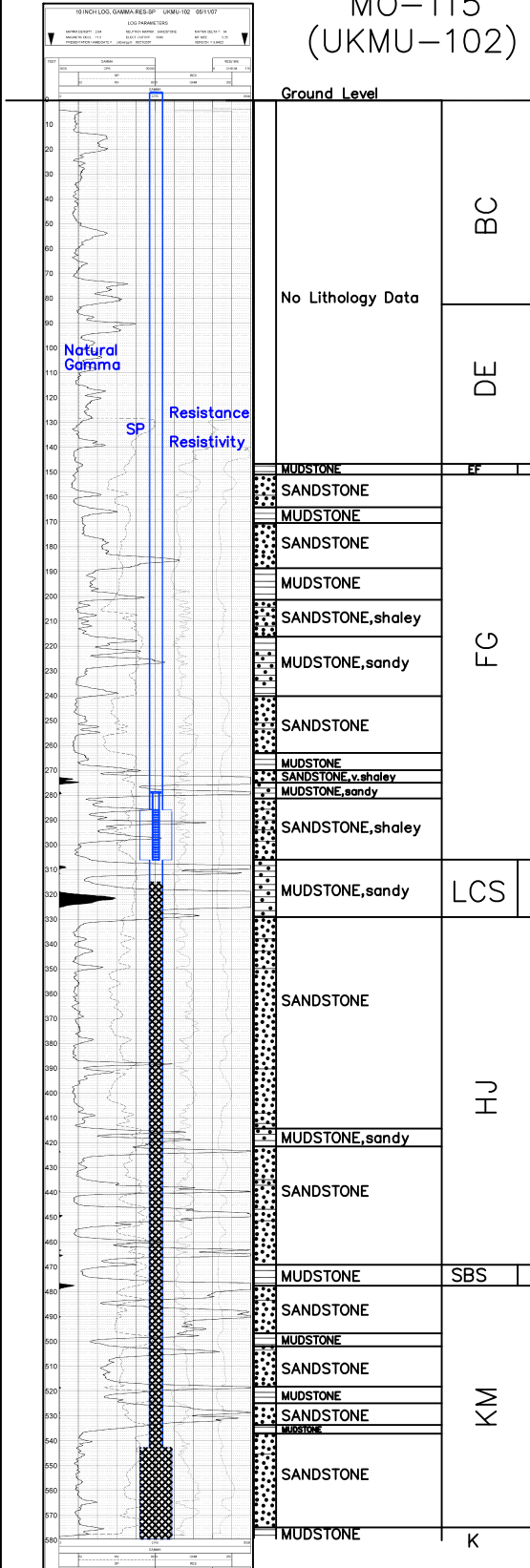


MO-115
(UKMU-102)

Lost Creek ISR, LLC
WELL COMPLETION REPORT



MO-115
(UKMU-102)

WELL # MO-115 SEO # 179908 Date Drilled: 5/11/07

Location: E 2,212,514 / N 595,856 (NAD 83)

Ground Elev: 6941.6' Measure Point Elev: 6942.62'

TD: 583' Hole Dia.: 7-7/8"

CASED to: 543' Casing: PVC SDR17 ID: 4.5" OD: 5"

GROUT: Portland Cement - Type I/II
Pumped thru casing, displaced to surface with water

COMPLETION Aquifer: LFG Sand

Static Water Level: Depth No Record Elev: _____ (avg.)

UNDERREAM: Blade Dia: 10.5"

Intervals: from 286' to 306' / length 20'

from 545' to 570' / length 25' (Back-plugged)

SCREEN LINER ASSEMBLY

Description	Depth		Elev.		Length
	From - To	/ From - To	From - To		
K-packer	279'		6663'		
Screen	286' 306'		6656' 6636'		20'

SCREEN SPECIFICATIONS:

Slot: 0.020" Composition 3" PVC

FILTER PACKING:

Volume: _____ (bags)(ft³) Sand Specs. _____

Method: N/A

WELL STIMULATION: Method Airlift

Yield: Good / Moderate / Poor

RECOMPLETED: 11/3/08 to monitor LFG

Backplugged: 315'-583' w/ Neat Cement

Underreamed with current completion interval

Renamed as MO-115

MO-115
(UKMU-102)