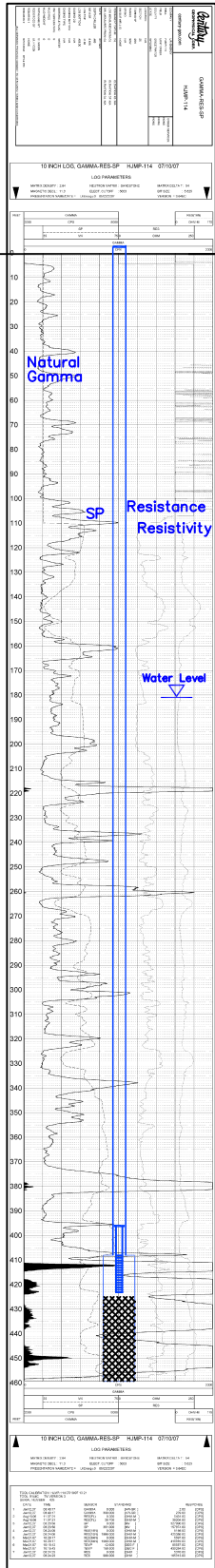


MP-102  
(HJMP-114)

Lost Creek ISR, LLC  
WELL COMPLETION REPORT

MP-102  
(HJMP-114)



MP-102  
(HJMP-114)

WELL # MP-102 SEO # 179903 Date Drilled: 7/10/07

Location: E 2,213,299 / N 595,400 (NAD 83)

Ground Elev: 6940.18' Measure Point Elev: 6941.01'

TD: 460' Hole Dia.: 7-7/8"

CASED to: 408' Casing: PVC SDR17 ID: 4.5" OD: 5"

GROUT: Portland Cement - Type I/II  
Pumped thru casing, displaced to surface with water

COMPLETION Aquifer: HJ Sand

Static Water Level: Depth 181' Elev: 6759' (avg.)

UNDERREAM: Blade Dia: 10.5"  
Intervals: from 408' to 423' / length 15'  
from \_\_\_\_\_ to \_\_\_\_\_ / length \_\_\_\_\_

SCREEN LINER ASSEMBLY

Description	Depth	Elev.	Length
	From - To	/ From - To	
K-packer	396'	6544'	
Screen	408' - 423'	6532' - 6517'	15'

SCREEN SPECIFICATIONS:

Slot: 0.020" Composition 3" PVC

FILTER PACKING:

Volume: \_\_\_\_\_ (bags)(ft<sup>3</sup>) Sand Specs. \_\_\_\_\_

Method: N/A

WELL STIMULATION: Method Airlift

Yield: Good / Moderate / Poor

BACK-PLUGGED: 425'-460' Neat Cement

RECOMPLETED: 8/14/08 to make completion interval consistent with production design.

Hole Backplugged: 425'-460' w/ Neat Cement  
Screen Liner modified to current completion interval  
Renamed as MP-102