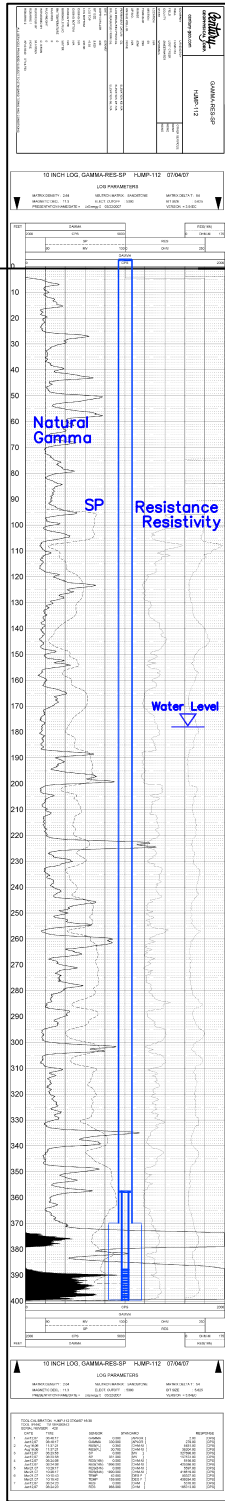


MP-103  
(HJMP-112)

Lost Creek ISR, LLC  
WELL COMPLETION REPORT

MP-103  
(HJMP-112)



MP-103  
(HJMP-112)

WELL # MP-103 SEO # 179897 Date Drilled: 7/4/07

Location: E 2,212,709 / N 595,381 (NAD 83)

Ground Elev: 6934.32' Measure Point Elev: 6935.48'

TD: 400' Hole Dia.: 7-7/8"

CASED to: 370' Casing: PVC SDR17 ID: 4.5" OD: 5"

GROUT: Portland Cement - Type I/II  
Pumped thru casing, displaced to surface with water

COMPLETION Aquifer: HJ Sand

Static Water Level: Depth 178' Elev: 6756' (avg.)

UNDERREAM: Blade Dia: 10.5"

Intervals: from 370' to 400' /length 30'  
from \_\_\_\_\_ to \_\_\_\_\_ /length \_\_\_\_\_

SCREEN LINER ASSEMBLY

Description	Depth		Elev.	
	From - To	/	From - To	
K-packer	358'		6576'	
Screen	388' - 400'		6546' - 6534'	12'

SCREEN SPECIFICATIONS:

Slot: 0.020" Composition 3" PVC

FILTER PACKING:

Volume: \_\_\_\_\_ (bags)(ft<sup>3</sup>) Sand Specs. \_\_\_\_\_

Method: N/A

WELL STIMULATION: Method Airlift

Yield Good / Moderate / Poor

RECOMPLETED: 8/11/08 to make completion interval consistent with production design.

Screen Liner modified to current completion interval  
Renamed as MP-103