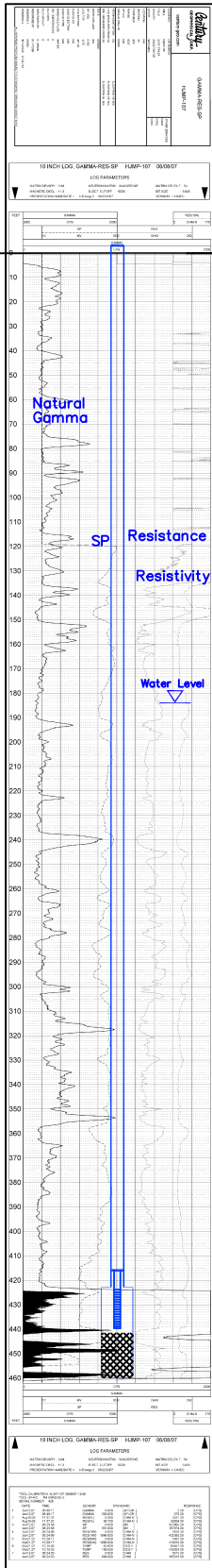


MP-104
(HJMP-107)

Lost Creek ISR, LLC
WELL COMPLETION REPORT

MP-104
(HJMP-107)



WELL # MP-104 SEO # 179882 Date Drilled: 6/8/07

Location: E 2,212,007 / N 595,515 (NAD 83)

Ground Elev: 6936.81 Measure Point Elev: 6938.45

TD: 464 ft. Hole Dia.: 7-7/8"

CASED to: 423' Casing: PVC SDR17 ID: 4.5" OD: 5"

GROUT: Portland Cement - Type I/II
Pumped thru casing, displaced to surface with water

COMPLETION Aquifer: HJ Sand

Static Water Level: Depth 184' Elev: 6753' (avg.)

UNDERREAM: Blade Dia: 10-1/2"

Intervals: from 423' to 460' / length 37'
from _____ to _____ / length _____

SCREEN LINER ASSEMBLY

Description	Depth		Elev.		Length
	From	To	From	To	
K-packer		416'		6521'	
Screen	424'	440'	6513'	6497'	16'

SCREEN SPECIFICATIONS:

Slot: 0.030" Composition 3" PVC

FILTER PACKING:

Volume: _____ (bags)(ft³) Sand Specs. _____

Method: N/A

WELL STIMULATION: Method Airlift

Yield: Good / Moderate / Poor

RECOMPLETED: 8/20/08 to make completion interval consistent with production design.

Hole Backplugged: 442'-460' w/ Neat Cement

Screen Liner modified to current completion interval

Renamed as MP-104

MP-104
(HJMP-107)