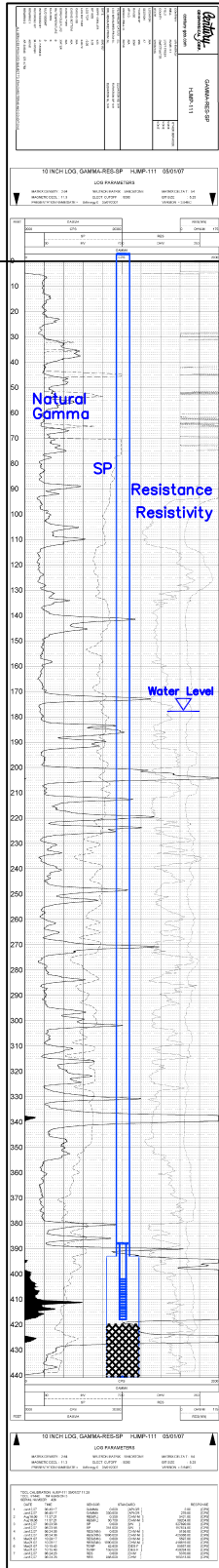


MP-105
(HJMP-111)

Lost Creek ISR, LLC
WELL COMPLETION REPORT

MP-105
(HJMP-111)



WELL # MP-105 SEO # 179894 Date Drilled: 5/1/07

Location: E 2,212,158 / N 596,079 (NAD 83)

Ground Elev: 6948.99 Measure Point Elev: 6949.49

TD: 440 ft. Hole Dia.: 7-7/8"

CASED to: 393' Casing: PVC SDR17 ID: 4.5" OD: 5"

GROUT: Portland Cement - Type I/II
Pumped thru casing, displaced to surface with water

COMPLETION Aquifer: HJ Sand

Static Water Level: Depth 178' Elev: 6771' (avg.)

UNDERREAM: Blade Dia: 10-1/2"
Intervals: from 393' to 440' / length 47'
from _____ to _____ / length _____

SCREEN LINER ASSEMBLY

Description	Depth		Elev.		Length
	From	To	From	To	
K-packer		388'		6561'	
Screen	402'	418'	6547'	6531'	16'

SCREEN SPECIFICATIONS:

Slot: 0.030" Composition 3" PVC

FILTER PACKING:

Volume: _____ (bags)(ft³) Sand Specs. _____
Method: N/A

WELL STIMULATION: Method Airlift

Yield: Good / Moderate / Poor

RECOMPLETED: 8/26/08 to make completion interval consistent with production design.

Hole Backplugged: 420'-440' w/ Neat Cement
Screen Liner modified to current completion interval
Renamed as MP-105

MP-105
(HJMP-111)