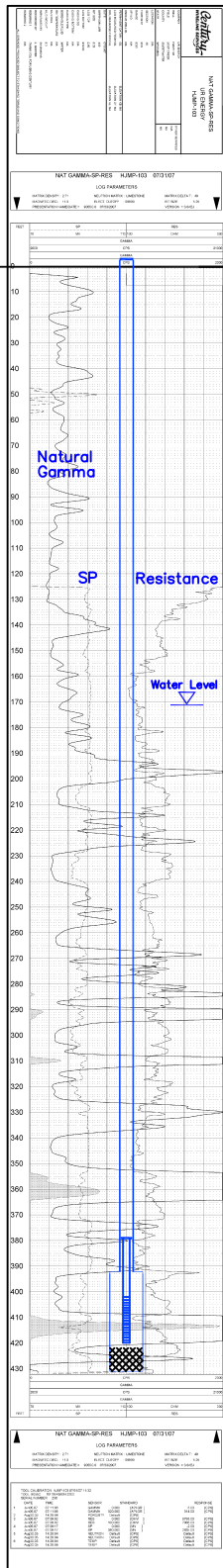


MP-107
(HJMP-103)

Lost Creek ISR, LLC
WELL COMPLETION REPORT

MP-107
(HJMP-103)



MP-107
(HJMP-103)

WELL # MP-107 SEO # 179870 Date Drilled: 7/31/07

Location: E 2,210,976 / N 595,822 (NAD 83)

Ground Elev: 6935.08 Measure Point Elev: 6936.49

TD: 432 ft. Hole Dia.: 7-7/8"

CASED to: 392' Casing: PVC SDR17 ID: 4.5" OD: 5"

GROUT: Portland Cement - Type I/II
Pumped thru casing, displaced to surface with water

COMPLETION Aquifer: HJ Sand

Static Water Level: Depth 171' Elev: 6764' (avg.)

UNDERREAM: Blade Dia: 10-1/2"

Intervals: from 392' to 432' / length 38'

from _____ to _____ / length _____

SCREEN LINER ASSEMBLY

Description	Depth		Elev.		Length
	From	To	From	To	
K-packer	379'		6556'		
Screen	402'	420'	6533'	6515'	18'

SCREEN SPECIFICATIONS:

Slot: 0.020" Composition 3" PVC

FILTER PACKING:

Volume: _____ (bags)(ft³) Sand Specs. _____

Method: N/A

WELL STIMULATION: Method Airlift

Yield: (Good) / Moderate / Poor

RECOMPLETED: 8/14/08 to make completion interval consistent with production design.

Hole Backplugged: 422'-432' w/ Neat Cement

Screen Liner modified to current completion interval

Renamed as MP-107