

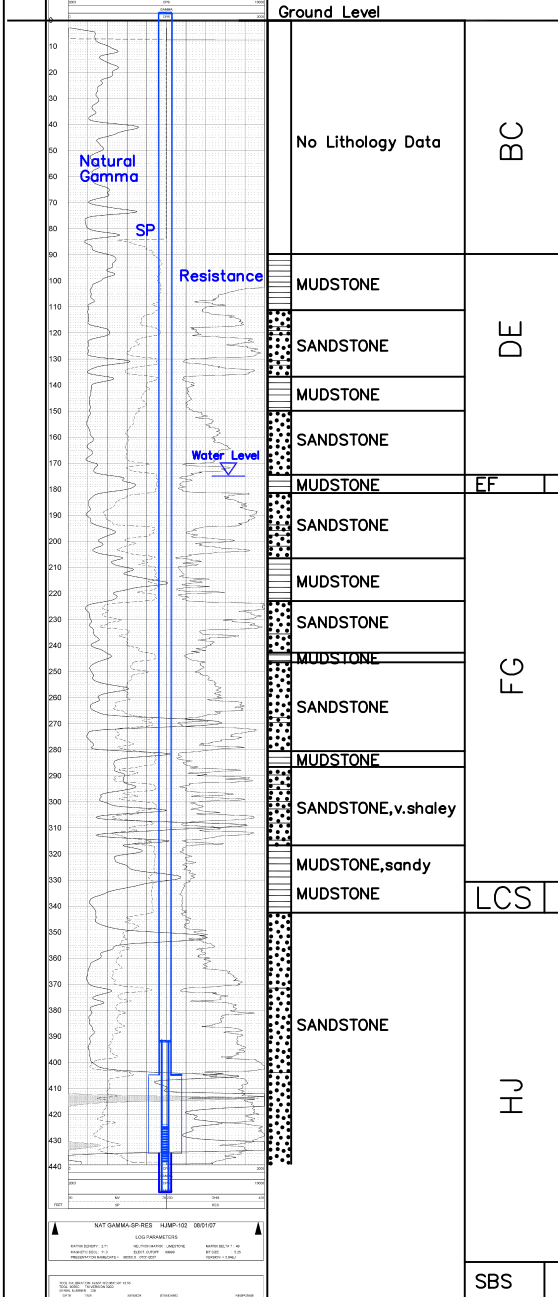
MP-108
(HJMP-102)

Lost Creek ISR, LLC
WELL COMPLETION REPORT

Company Lost Creek ISR, LLC 225 North Columbia Street Suite 200 Tulsa, Oklahoma 74103 Phone: 918.596.1111 Fax: 918.596.1112 Website: www.lostcreek.com	
---	--

MP-108
(HJMP-102)

NAT GAMMA-SP-RES HJMP-102 080107 DATE: 08/01/07 TIME: 08:00 WELL: HJMP-102 LOCATION: E 742,559 / N 534,755 (NAD 27) GROUND ELEV: 6934.15' MEASURE POINT ELEV: 6936.15' TD: 440' HOLE DIA: 7-7/8"	
---	--



Vertical Scale: 1"=50'

MP-108
(HJMP-102)

WELL # HJMP-102 SEO # 179867 Date Drilled: 8-1-07

Location: E 742,559 / N 534,755 (NAD 27)

Ground Elev: 6934.15' Measure Point Elev: 6936.15'

TD: 440' Hole Dia.: 7-7/8"

CASED to: 405' Casing: PVC SDR17 ID: 4.5" OD: 5"

GROUT: Portland Cement - Type I/II
Pumped thru casing, displaced to surface with water

COMPLETION Aquifer: HJ Sand

Static Water Level: Depth 175' Elev: 6762' (avg.)

UNDERREAM: Blade Dia: 10.5"

Intervals: from 405' to 435' / length 30'

from _____ to _____ / length _____

SCREEN LINER ASSEMBLY

Description	Depth		Elev.		Length
	From	To	From	To	
K-packer	392'		6542'		
Screen	424'	438'	6510'	6496'	30'

SCREEN SPECIFICATIONS:

Slot: 0.020" Composition 3" PVC

FILTER PACKING:

Volume: _____ (bags)(ft³) Sand Specs. _____

Method: N/A

WELL STIMULATION: Method Airlift

Yield: Good / Moderate / Poor

(RECOMPLETED: 8/13/08 to make completion interval consistent with production design.

Hole Deepened to 450'

Screen Liner modified to current completion interval

Renamed as MP-108