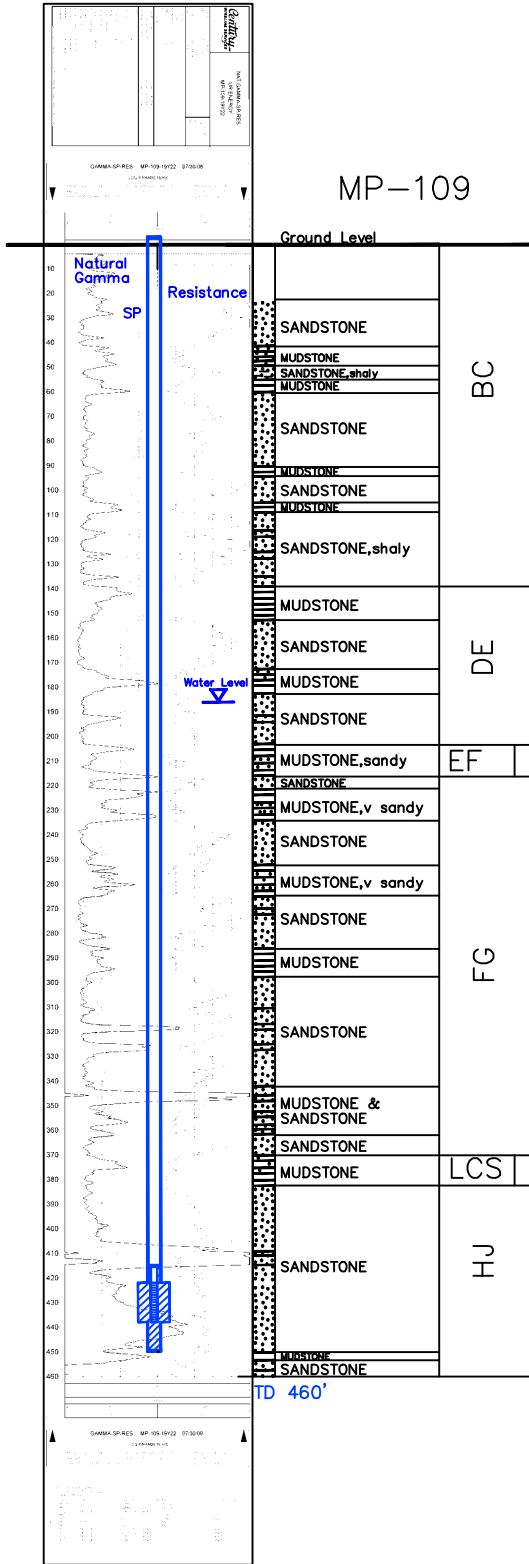


MP-109

Lost Creek ISR, LLC
WELL COMPLETION REPORT



MP-109

WELL # MP-109 SEO # 187659 Date Drilled: 7/30/08

Location: E 2,210,955 / N 595,235 (NAD 83)

Ground Elev: 6932.1' Measure Point Elev: 6932.71'

TD: 460' Hole Dia.: 7-7/8"

CASED to: 450' Casing: PVC SDR17 ID: 4.5" OD: 5"

GROUT: Portland Cement - Type I/II
 Pumped thru casing, displaced to surface with water

COMPLETION Aquifer: MHJ Sand

Static Water Level: Depth 186' Elev: 6747' (avg.)

UNDERREAM: Blade Dia: 10"

Intervals: from 422' to 438' / length 16'
 from _____ to _____ / length _____

SCREEN LINER ASSEMBLY

Description	Depth		Elev.		Length
	From	To	From	To	
K-packer	415'		6517'		
Screen	422'	438'	6510'	6494'	16'

SCREEN SPECIFICATIONS:

Slot: 0.020" Composition 3" PVC

FILTER PACKING:

Volume: 17 (bags) Sand Specs. 10/20

Method: Pumped via tremie thru check valve

WELL STIMULATION: Method Airlift

Yield: Good / Moderate / Poor