

MP-110

Lost Creek ISR, LLC
WELL COMPLETION REPORT

MP-110

WELL # MP-110 SEO # 187659 Date Drilled: 7/30/08

Location: E 2,210,185 / N 595,648 (NAD 83)

Ground Elev: 6937.6' Measure Point Elev: 6938.69'

TD: 460' Hole Dia.: 7-7/8"

CASED to: 445' Casing: PVC SDR17 ID: 4.5" OD: 5"

GROUT: Portland Cement - Type I/II
 Pumped thru casing, displaced to surface with water

COMPLETION Aquifer: MHJ Sand

Static Water Level: Depth 178' Elev: 6760' (avg.)

UNDERREAM: Blade Dia: 10"
 Intervals: from 419' to 438' / length 19'
 from _____ to _____ / length _____

SCREEN LINER ASSEMBLY

Description	Depth		Elev.		Length
	From - To	/ From - To			
K-packer	412'		6526'		
Screen	419'	438'	6519'	6500'	19'

SCREEN SPECIFICATIONS:

Slot: 0.020" Composition 3" PVC

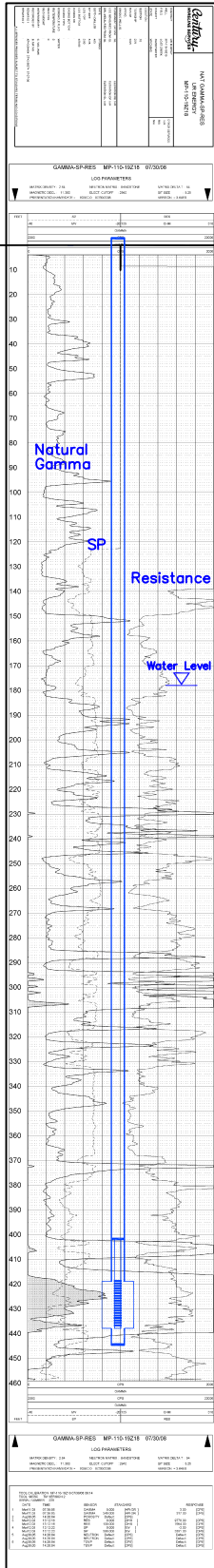
FILTER PACKING:

Volume: _____ (bags)(ft³) Sand Specs. _____

Method: N/A

WELL STIMULATION: Method Airlift

Yield: Good / Moderate / Poor



MP-110