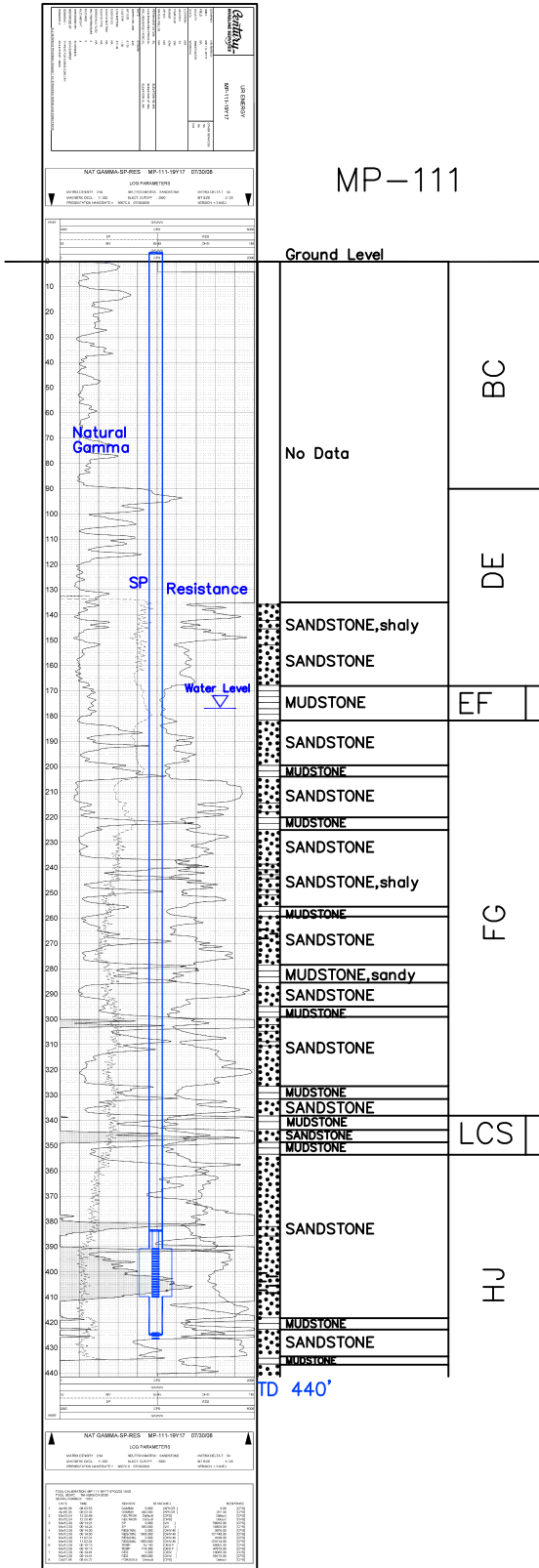


MP-111

Lost Creek ISR, LLC
WELL COMPLETION REPORT

MP-111



MP-111

WELL # MP-111 SEO # 187659 Date Drilled: 7/30/08

Location: E 2,209,951 / N 595,361 (NAD 83)

Ground Elev: 6935.6' Measure Point Elev: 6936.28'

TD: 440' Hole Dia.: 7-7/8"

CASED to: 425' Casing: PVC SDR17 ID: 4.5" OD: 5"

GROUT: Portland Cement - Type I/II
 Pumped thru casing, displaced to surface with water

COMPLETION Aquifer: MHJ Sand
 Static Water Level: Depth 177' Elev: 6759' (avg.)

UNDERREAM: Blade Dia: 10"
 Intervals: from 391' to 410' / length 19'
 from _____ to _____ / length _____

SCREEN LINER ASSEMBLY

Description	Depth	Elev.	Length
	From - To	From - To	
K-packer	384'	6552'	
Screen	391' 410'	6545' 6526'	19'

SCREEN SPECIFICATIONS:
 Slot: 0.020" Composition 3" PVC

FILTER PACKING:
 Volume: _____ (bags)(ft³) Sand Specs. _____
 Method: N/A

WELL STIMULATION: Method Airlift
 Yield: Good / Moderate / Poor