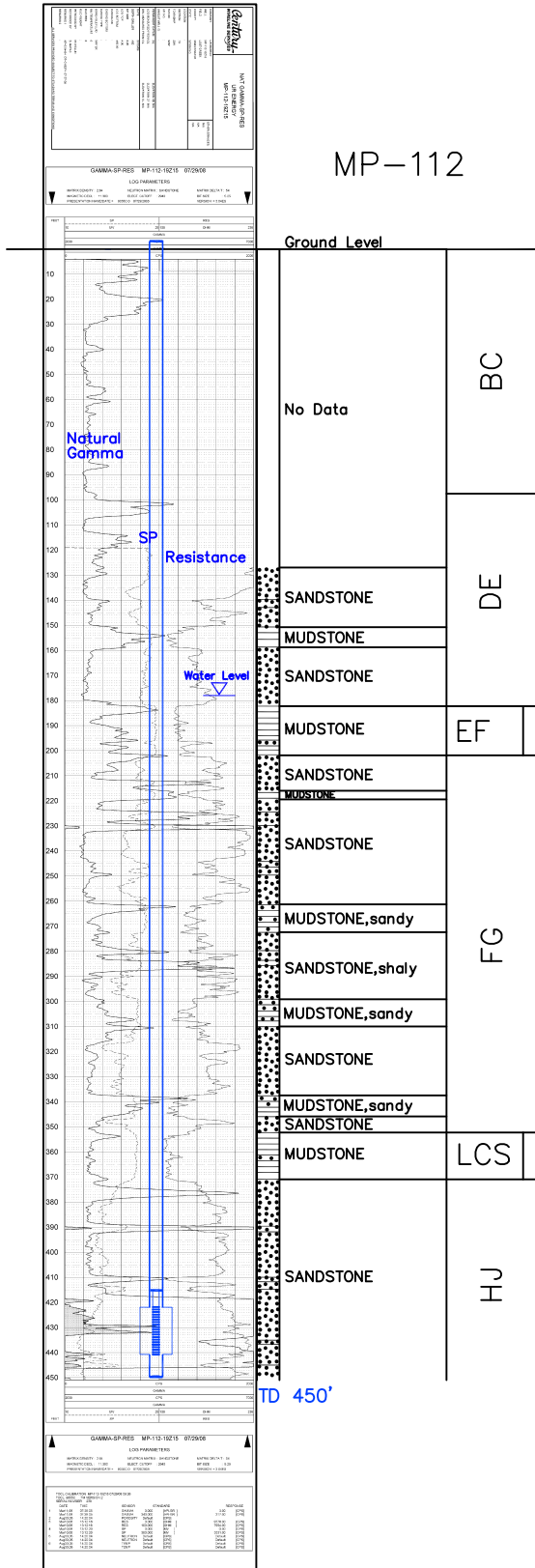


MP-112

Lost Creek ISR, LLC  
WELL COMPLETION REPORT

MP-112



WELL # MP-112 SEO # 187659 Date Drilled: 7/28/08

Location: E 2,209,586 / N 595,535 (NAD 83)

Ground Elev: 6936.6' Measure Point Elev: 6936.64'

TD: 450' Hole Dia.: 7-7/8"

CASED to: 450' Casing: PVC SDR17 ID: 4.5" OD: 5"

GROUT: Portland Cement - Type I/II  
 Pumped thru casing, displaced to surface with water

COMPLETION Aquifer: MHJ Sand

Static Water Level: Depth 178' Elev: 6759' (avg.)

UNDERREAM: Blade Dia: 10"

Intervals: from 422' to 441' / length 19'  
 from \_\_\_\_\_ to \_\_\_\_\_ / length \_\_\_\_\_

SCREEN LINER ASSEMBLY

Description	Depth	Elev.		Length
		From - To	From - To	
<u>K-packer</u>	<u>415'</u>	<u>6522'</u>		
<u>Screen</u>	<u>422' 441'</u>	<u>6515' 6496'</u>	<u>19'</u>	

SCREEN SPECIFICATIONS:

Slot: 0.020" Composition 3" PVC

FILTER PACKING:

Volume: \_\_\_\_\_ (bags)(ft<sup>3</sup>) Sand Specs. \_\_\_\_\_

Method: N/A

WELL STIMULATION: Method Airlift

Yield: Good / Moderate / Poor

MP-112