

MP-113

Lost Creek ISR, LLC  
**WELL COMPLETION REPORT**

MP-113

WELL # MP-113 SEO # 187659 Date Drilled: 7/28/08

Location: E 2,209,861 / N 594,950 (NAD 83)

Ground Elev: 6922.2' Measure Point Elev: 6923.19'

TD: 475' Hole Dia.: 7-7/8"

CASED to: 475' Casing: PVC SDR17 ID: 4.5" OD: 5"

GROUT: Portland Cement - Type I/II  
 Pumped thru casing, displaced to surface with water

COMPLETION Aquifer: MHJ Sand

Static Water Level: Depth 185' Elev: 6737' (avg.)

UNDERREAM: Blade Dia: 10"

Intervals: from 447' to 466' / length 19'  
 from \_\_\_\_\_ to \_\_\_\_\_ / length \_\_\_\_\_

SCREEN LINER ASSEMBLY

Description	Depth		Elev.		Length
	From - To	/ From - To			
K-packer	440'		6482'		
Screen	447'	466'	6475'	6456'	19'

SCREEN SPECIFICATIONS:

Slot: 0.020" Composition 3" PVC

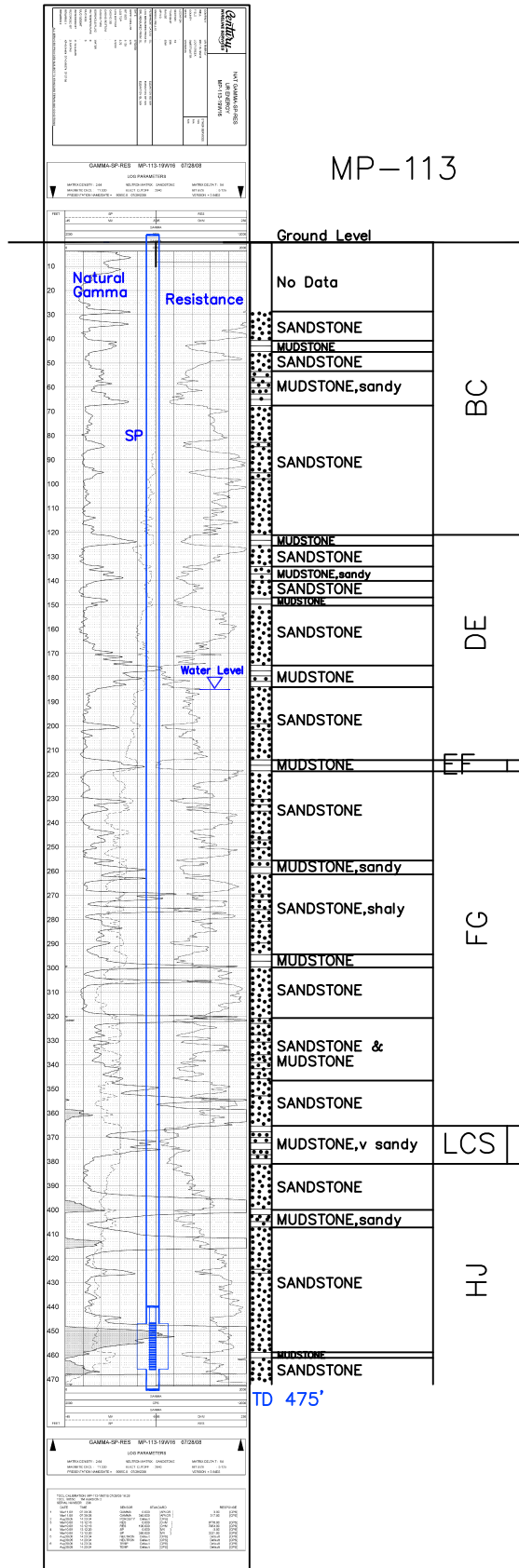
FILTER PACKING:

Volume: \_\_\_\_\_ (bags)(ft<sup>3</sup>) Sand Specs. \_\_\_\_\_

Method: N/A

WELL STIMULATION: Method Airlift

Yield: Good / Moderate / Poor



MP-113