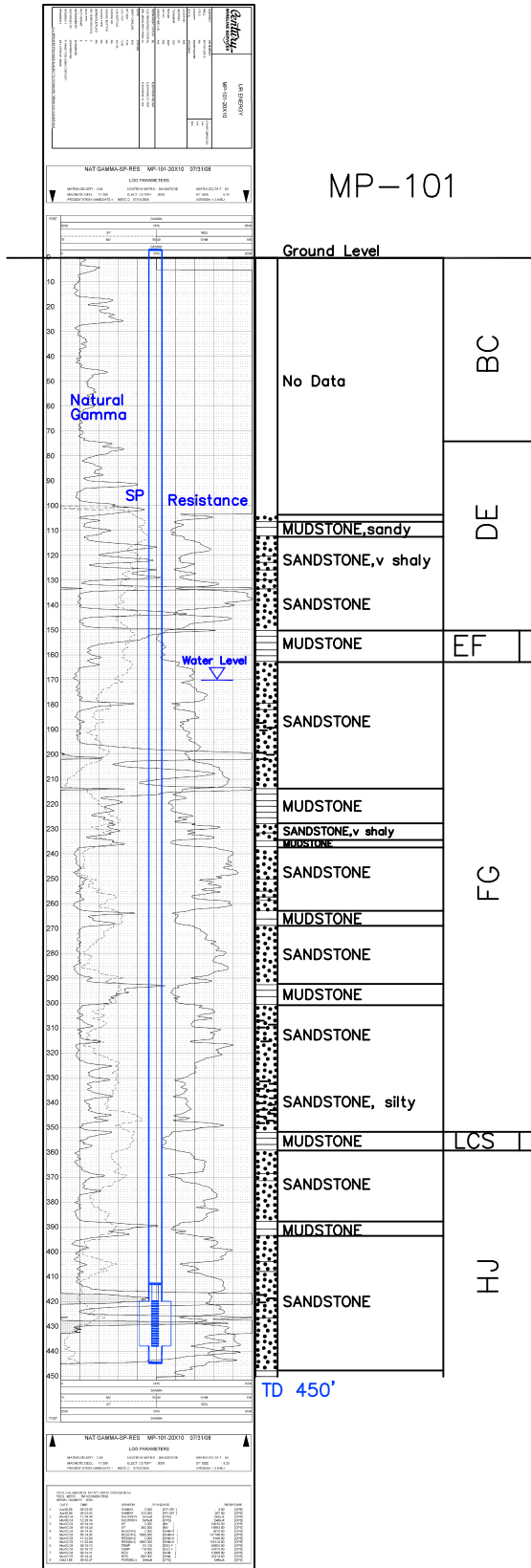


MP-101

Lost Creek ISR, LLC
WELL COMPLETION REPORT



MP-101

WELL # MP-101 SEO # 187662 Date Drilled: 7/31/08

Location: E 2,213,875 / N 595,194 (NAD 83)

Ground Elev: 6938.6' Measure Point Elev: 6940.30'

TD: 450' Hole Dia.: 7-7/8"

CASED to: 445' Casing: PVC SDR17 ID: 4.5" OD: 5"

GROUT: Portland Cement - Type I/II
 Pumped thru casing, displaced to surface with water

COMPLETION Aquifer: MHJ Sand

Static Water Level: Depth 170' Elev: 6769' (avg.)

UNDERREAM: Blade Dia: 10"
 Intervals: from 420' to 438' / length 18'
 from _____ to _____ / length _____

SCREEN LINER ASSEMBLY

| Description | Depth | | Elev. | | Length |
|-------------|-------|------|-------|-------|--------|
| | From | To | From | To | |
| K-packer | 413' | | 6526' | | |
| Screen | 420' | 438' | 6519' | 6501' | 18' |
| | | | | | |
| | | | | | |

SCREEN SPECIFICATIONS:

Slot: 0.020" Composition 3" PVC

FILTER PACKING:

Volume: _____ (bags)(ft³) Sand Specs. _____

Method: N/A

WELL STIMULATION: Method Airlift

Yield: Good / Moderate / Poor

MP-101