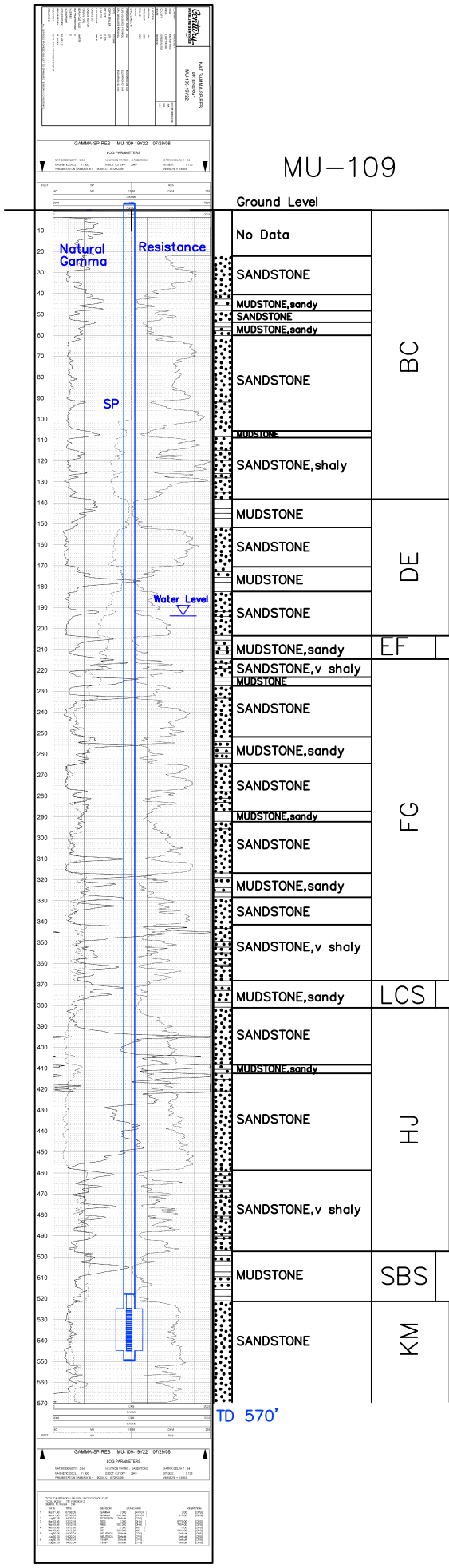


MU-109

Lost Creek ISR, LLC

WELL COMPLETION REPORT

MU-109



WELL # MU-109 SEO # 187658 Date Drilled: 7/29/08

Location: E 2,210,944 / N 595,230 (NAD 83)

Ground Elev: 6932.0' Measure Point Elev: 6932.78'

TD: 570' Hole Dia.: 7-7/8"

CASED to: 550' Casing: PVC SDR17 ID: 4.5" OD: 5"

GROUT: Portland Cement - Type I/II
Pumped thru casing, displaced to surface with water

COMPLETION Aquifer: UKM Sand

Static Water Level: Depth 194' Elev: 6738' (avg.)

UNDERREAM: Blade Dia: 10"

Intervals: from 525' to 545' / length 20'
from _____ to _____ / length _____

SCREEN LINER ASSEMBLY

Description	Depth		Elev.	Length
	From - To	/ From - To		
K-packer	518'		6414'	
Screen	525' - 545'		6407' - 6387'	20'

SCREEN SPECIFICATIONS:

Slot: 0.020" Composition 3" PVC

FILTER PACKING:

Volume: _____ (bags)(ft³) Sand Specs. _____
Method: N/A

WELL STIMULATION: Method Airlift

Yield: Good / Moderate / Poor