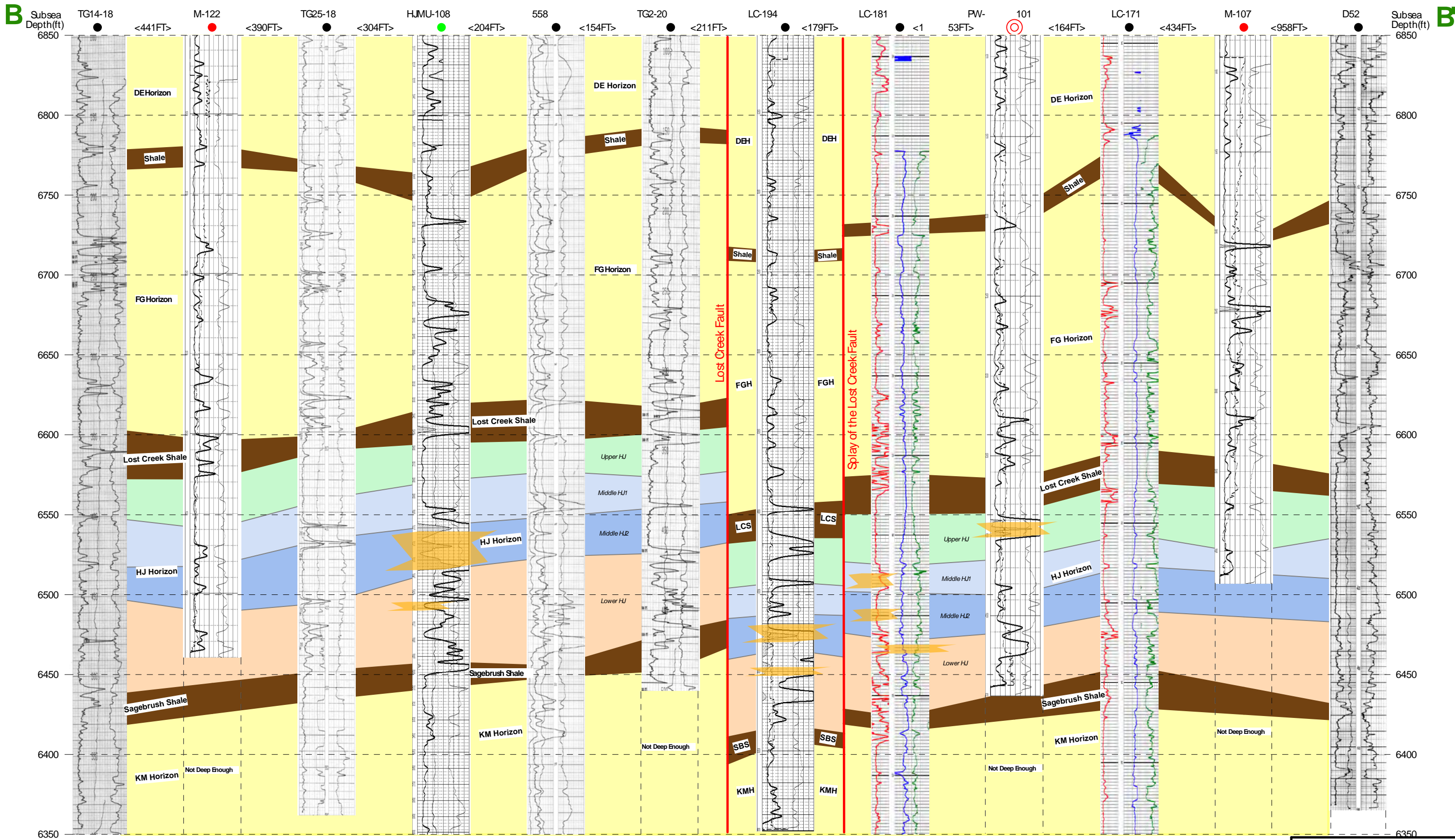


Note: Tops are auto-interpolated for logs that are not deep enough

Proposed Mining Interval

Petrotek
 10389 West Chaffee Ave. Ste 201
 Littleton, Colorado 80120-4228
 303.295.8416
 www.petrotek.com

Lost Creek ISR, LLC
 Figure 2-7
 Structural Cross Section A - A'
 Mine Unit 1
 By: KRSChecked: AP



Note: Tops are auto-interpolated for logs that are not deep enough

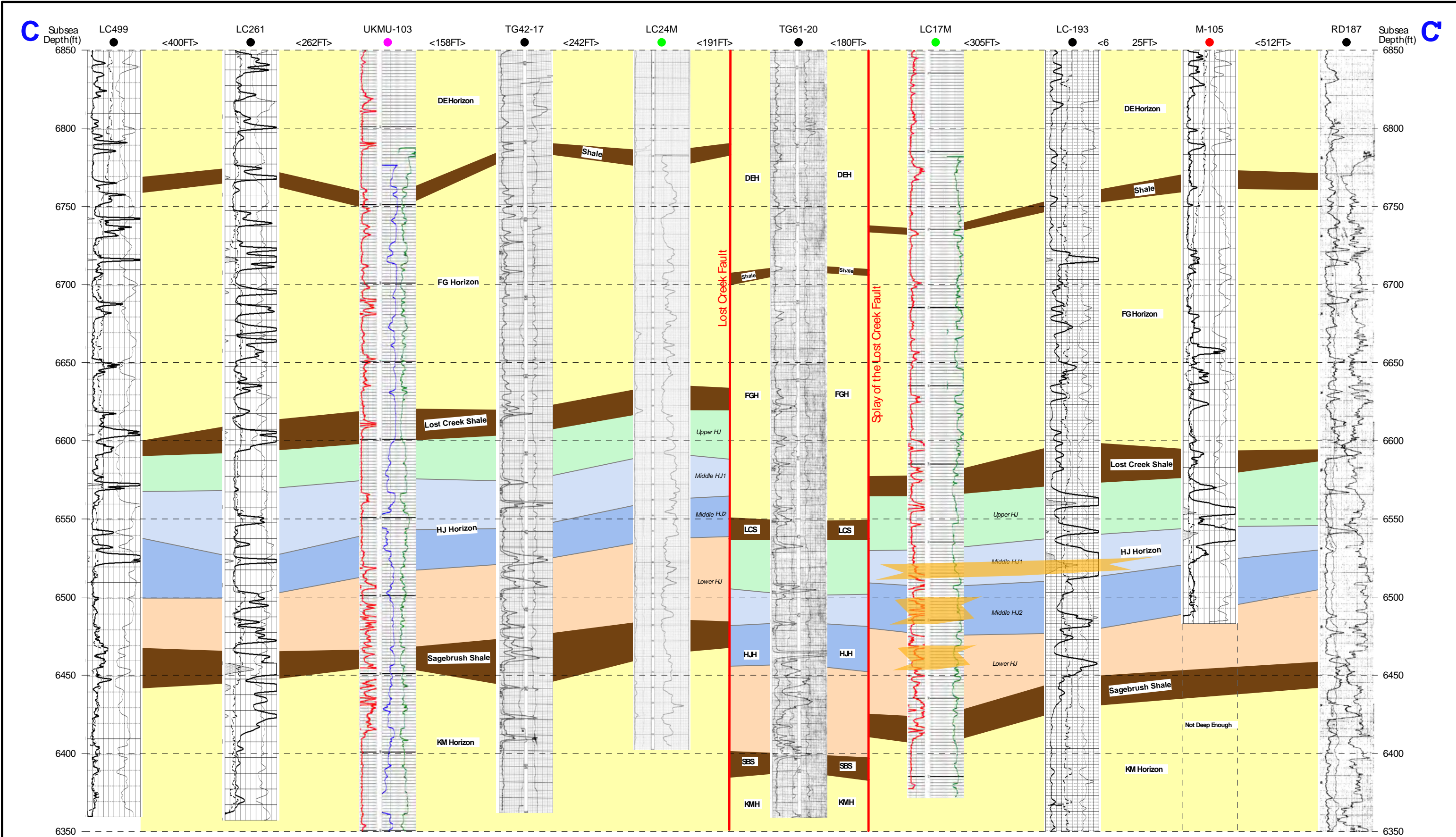
 Proposed Mining Interval

Petrotek
 10388 West Chefield Ave., Ste 201
 Littleton, Colorado 80127-4238
 303.295.8414
 www.petrotek.com

Lost Creek ISR, LLC

Figure 2-8
 Structural Cross Section B-B
 Mine Unit 1

By: KFS Checked: AP
 March 4, 2010 9:03 AM

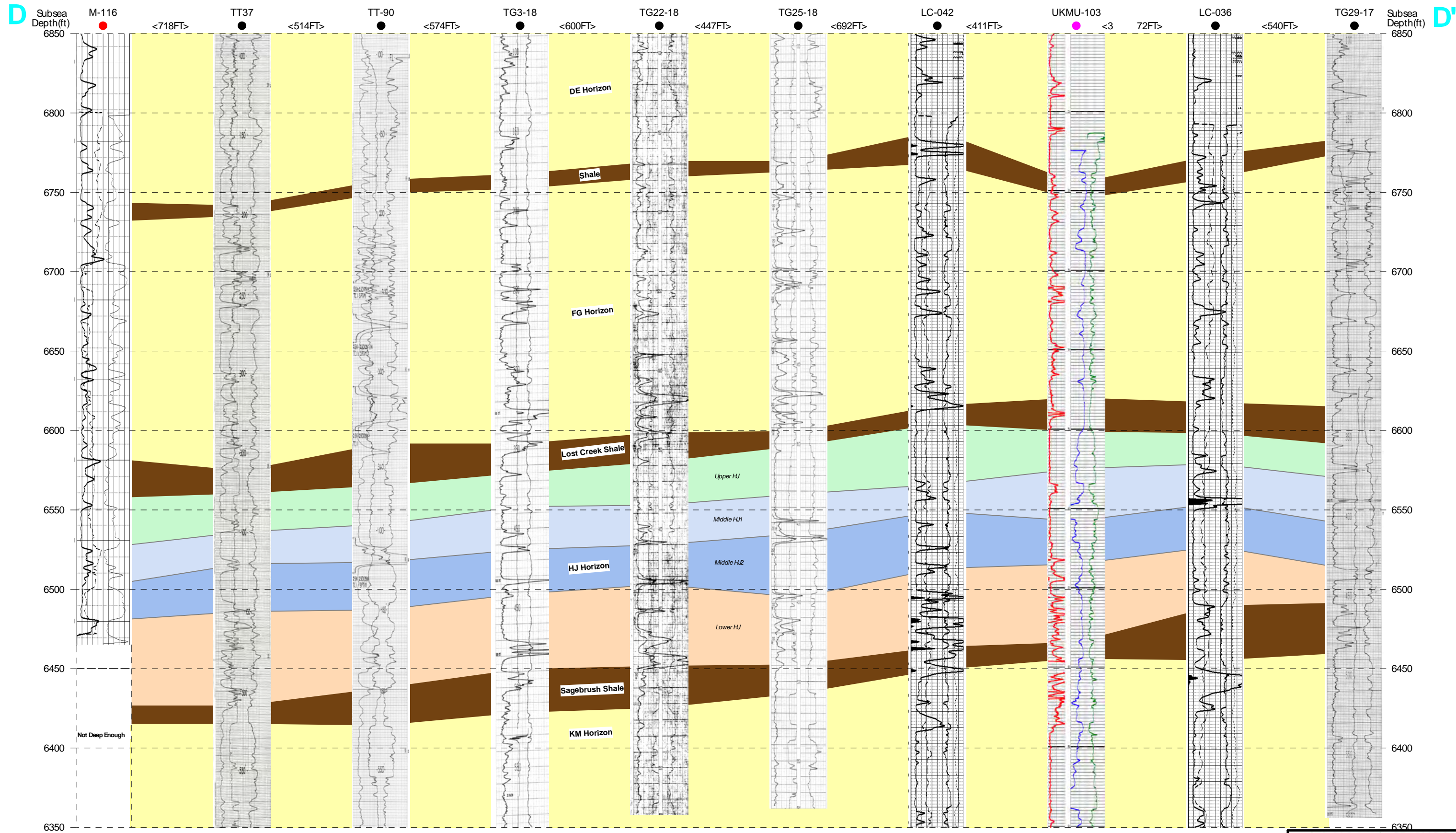


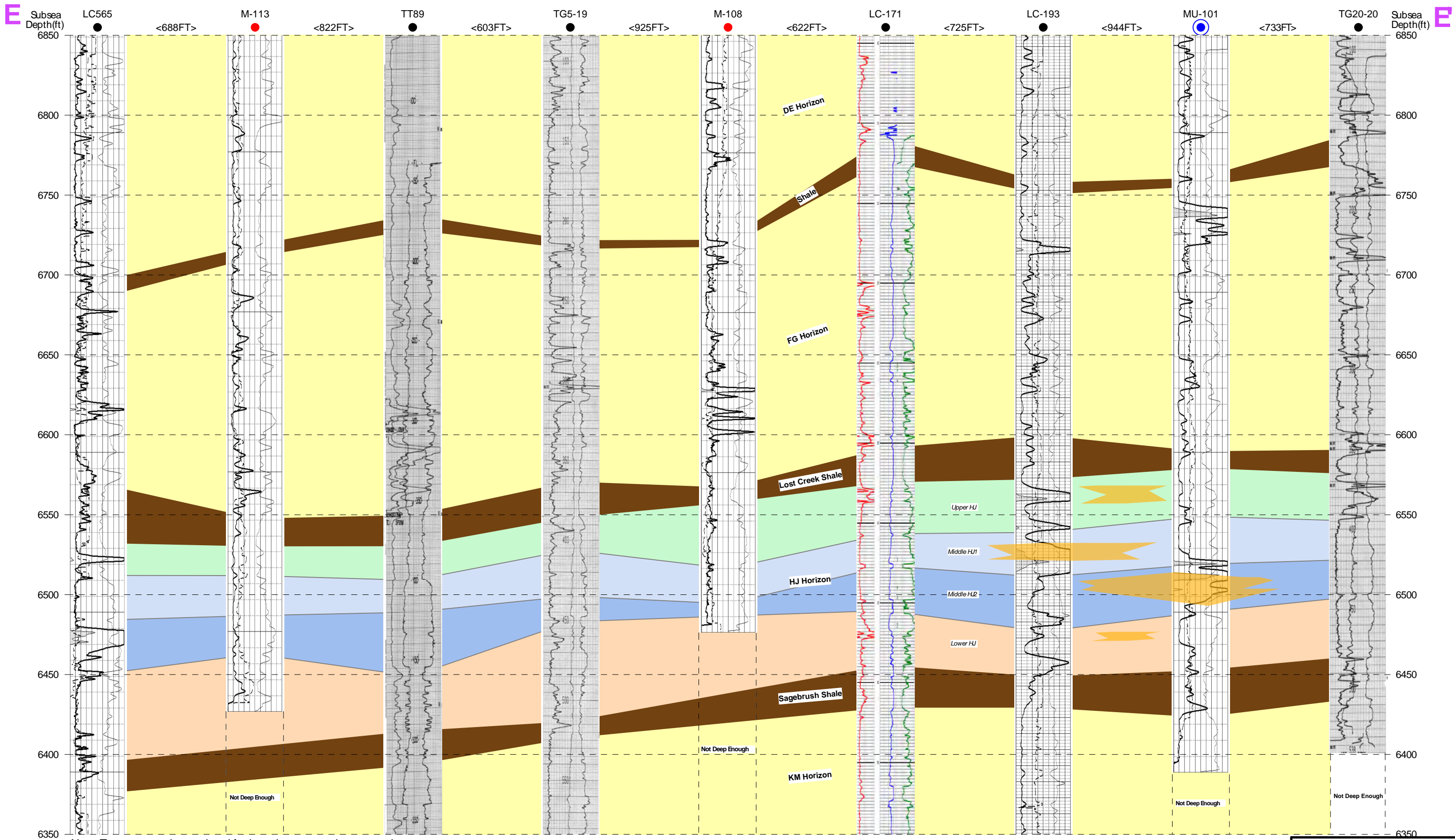
Note: Tops are auto-interpolated for logs that are not deep enough

 Proposed Mining Interval

Petrotek
 10389 West Chaffee Ave. Ste 201
 Littleton, Colorado 80120-4228
 303.290.8416
 www.petrotek.com

Lost Creek ISR, LLC
 Figure 2-9
 Structural Cross Section C - C
 Mine Unit 1
 By: KRSChecked: AP

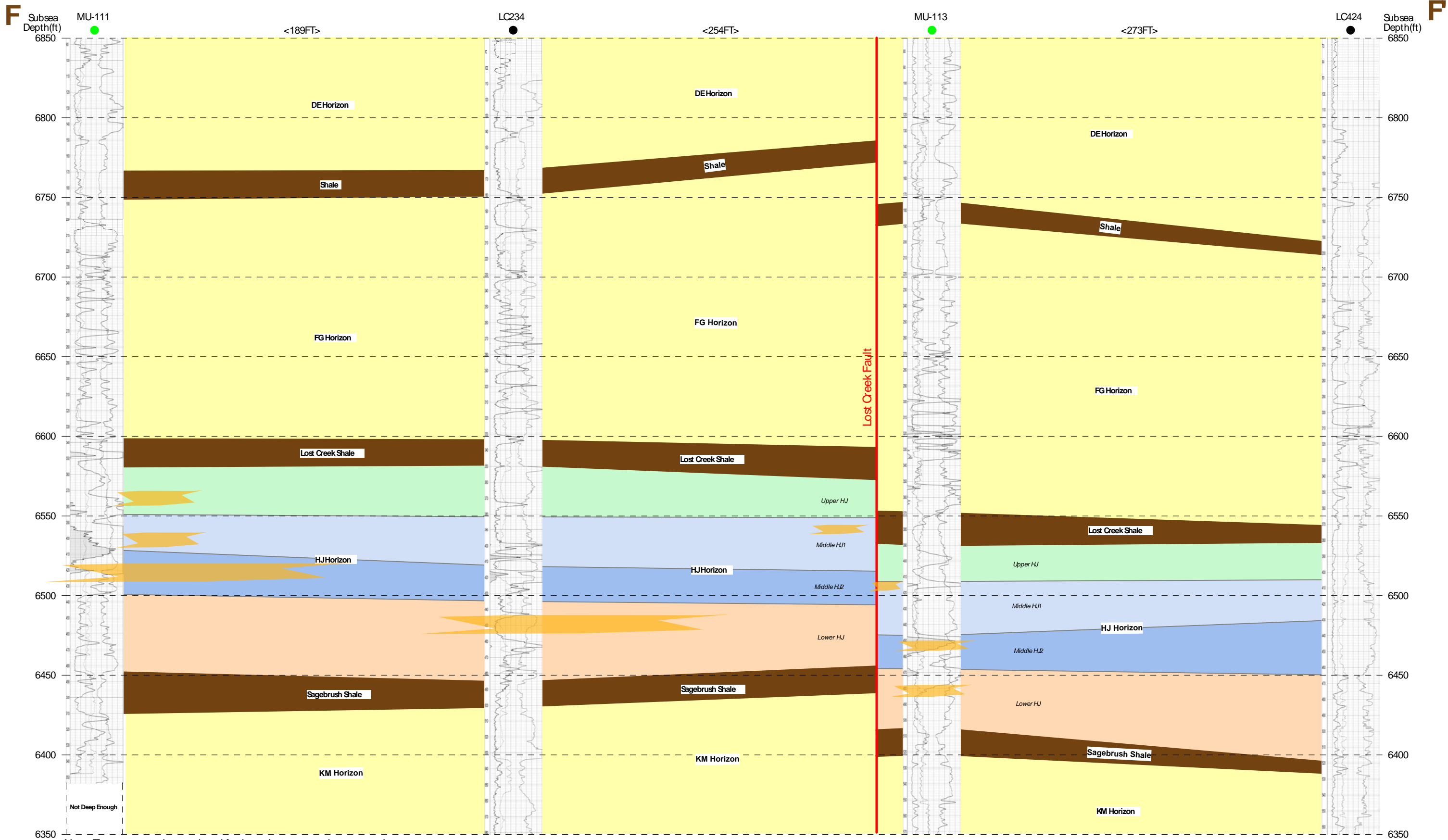




Note: Tops are auto-interpolated for logs that are not deep enough

 Proposed Mining Interval

Petrotek <small>10388 West Chaffield Ave. Ste 201 Littleton, Colorado 80127-4238 303.295.8414 www.petrotek.com</small>
Lost Creek ISR, LLC
Figure 2-11
Structural Cross Section E-E
Mine Unit 1
By: KRS/Checked: AP
March 4, 2010 9:45 AM



Note: Tops are auto-interpolated for logs that are not deep enough

 Proposed Mining Interval

Petrotek 10200 West Chadwell Ave. Ste 201
 Littleton, Colorado 80127-4229
 303.295.9414
 www.petrotek.com

Lost Creek ISR LLC
 Figure 2-12
 Structural Cross Section F - F
 Mine Unit 1
 By: KFS/Checked: AP