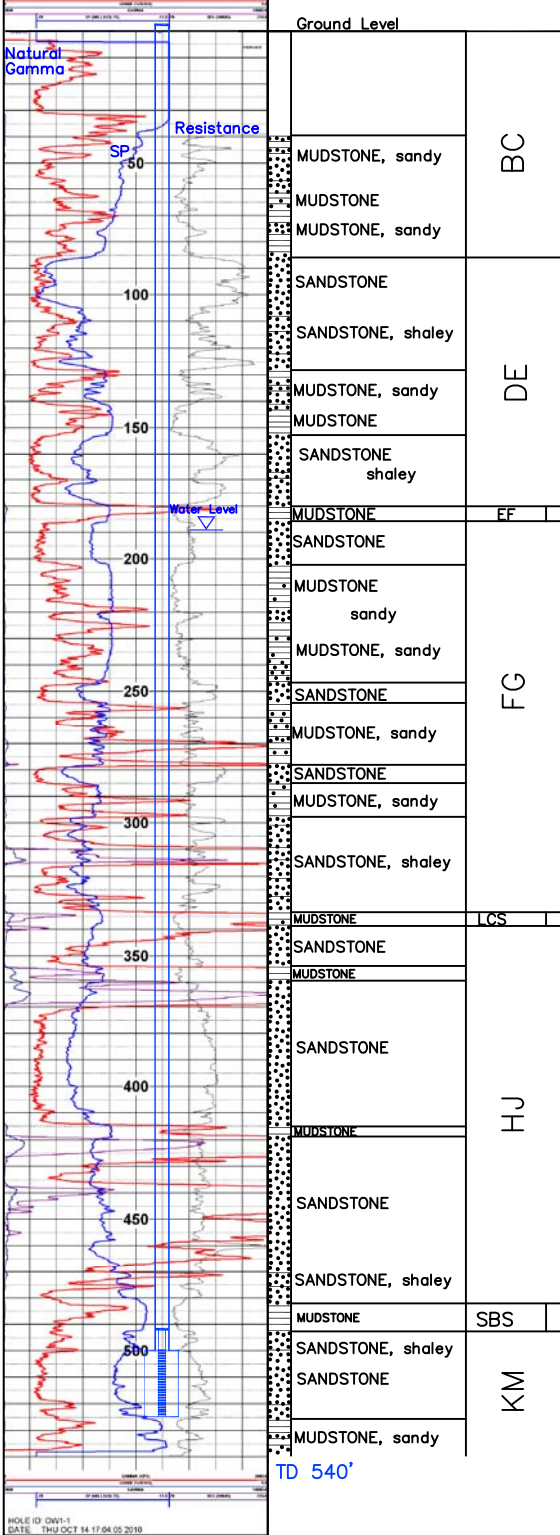


OW1-1

Lost Creek ISR, LLC  
WELL COMPLETION REPORT



WELL # OW1-1 SEO # 193899 Date Drilled: 10/14/10

Location: E 2,209,877 / N 595,075 (NAD 83)

Ground Elev: 6926.0' Measure Point Elev: 6927.0'

TD: 540' Hole Dia.: 7-7/8"

CASED to: 500' Casing: PVC SDR17 ID: 4.5" OD: 5"

GROUT: Portland Cement - Type I/II  
 Pumped thru casing, displaced to surface with water

COMPLETION Aquifer: UKM Sand

Static Water Level: Depth 188' Elev: 6738' (avg.)

UNDERREAM: Blade Dia: 10"

Intervals: from 500' to 525' / length 25'  
 from \_\_\_\_\_ to \_\_\_\_\_ / length \_\_\_\_\_

SCREEN LINER ASSEMBLY

Description	Depth	Elev.	Length
	From - To	/ From - To	
K-packer	492'	6434'	
Screen	500' 525'	6426' 6401'	25'

SCREEN SPECIFICATIONS:

Slot: 0.020" Composition 3" PVC

FILTER PACKING:

Volume: \_\_\_\_\_ (bags)(ft<sup>3</sup>) Sand Specs. \_\_\_\_\_  
 Method: N/A

WELL STIMULATION: Method Airlift

Yield: Good / Moderate / Poor

HOLE ID: OW1-1  
 DATE: THU OCT 14 17:04:05 2010

OW1-1