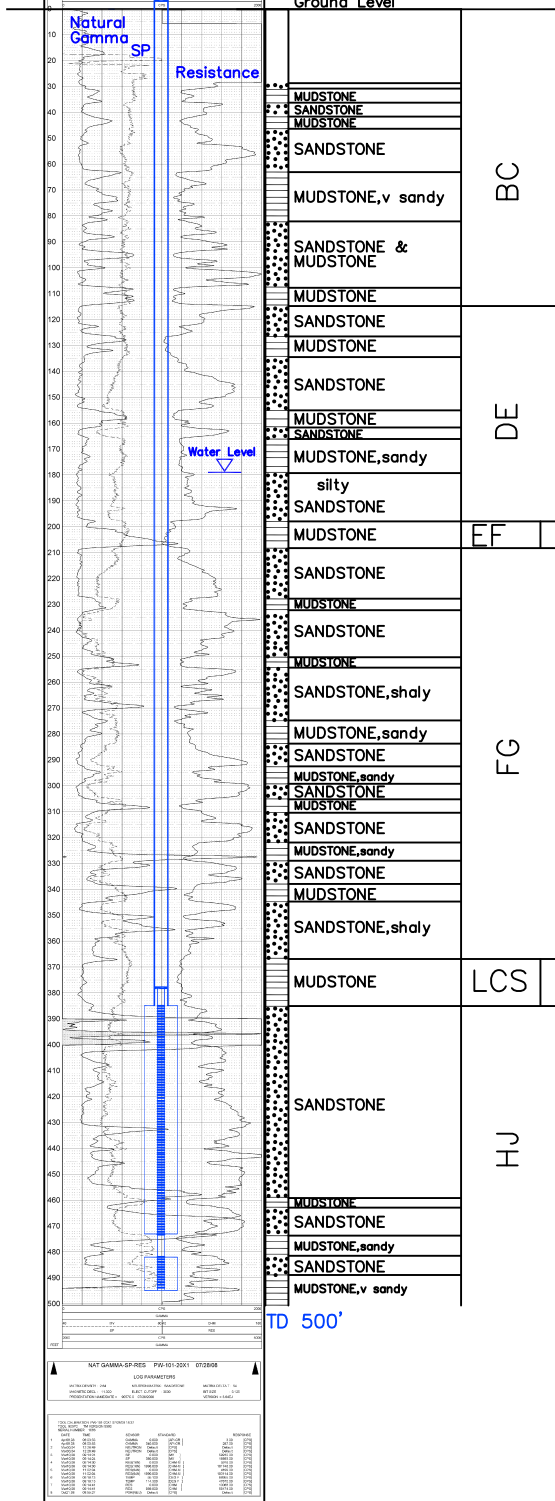


PW-101

Lost Creek ISR, LLC  
WELL COMPLETION REPORT

PW-101



WELL # PW-101 SEO # 187664 Date Drilled: 7/28/08  
 Location: E 2,212,158 / N 595,259 (NAD 83)  
 Ground Elev: 6937.4' Measure Point Elev: 6938.06'  
 TD: 500' Hole Dia.: 9-1/2"  
 CASIED to: 385" Casing: PVC SDR17 ID: 6" OD: 6-5/8"

GROUT: Portland Cement – Type I/II  
 Pumped thru casing, displaced to surface with water

COMPLETION Aquifer: HJ Sand  
 Static Water Level: Depth 179' Elev: 6758' (avg.)

UNDERREAM: Blade Dia: 10"  
 Intervals: from 385' to 473' / length 88'  
 from 482' to 495' / length 13'

SCREEN LINER ASSEMBLY

Description	Depth		Elev.	Length
	From – To	/ From – To		
K-packer	<u>378'</u>		<u>6559'</u>	
Screen	<u>385'</u>	<u>473'</u>	<u>6552'</u>	<u>6464'</u> <u>88'</u>
Screen	<u>482'</u>	<u>495'</u>	<u>6455'</u>	<u>6442'</u> <u>13'</u>

SCREEN SPECIFICATIONS:

Slot: 0.020" Composition 3" PVC

FILTER PACKING:

Volume: \_\_\_\_\_ (bags)(ft<sup>3</sup>) Sand Specs. \_\_\_\_\_  
 Method: N/A

WELL STIMULATION: Method Airlift

Yield: Good / Moderate / Poor

PW-101