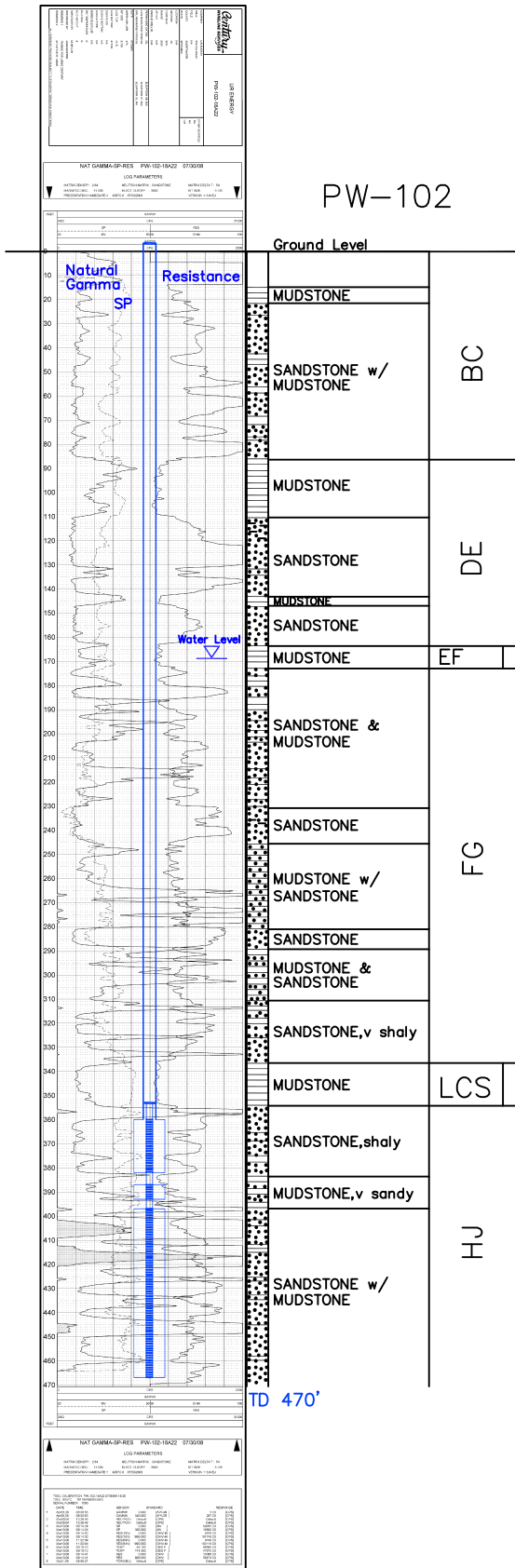


PW-102

Lost Creek ISR, LLC
WELL COMPLETION REPORT

PW-102



WELL # PW-102 SEO # 187663 Date Drilled: 7/30/08
 Location: E 2,210,906 / N 595,846 (NAD 83)
 Ground Elev: 6938.0' Measure Point Elev: 6938.58'
 TD: 470' Hole Dia.: 9-1/2"
 CASSED to: 360' Casing: PVC SDR17 ID: 6" OD: 6-5/8"

GROUT: Portland Cement - Type I/II
 Pumped thru casing, displaced to surface with water

COMPLETION Aquifer: HJ Sand
 Static Water Level: Depth 169' Elev: 6769' (avg.)

UNDERREAM: Blade Dia: 10"
 Intervals: from 360' to 382' / length 22'
 from 387' to 393' / length 6'
 from 397' to 467' / length 70'

SCREEN LINER ASSEMBLY

Description	Depth		Elev.		Length
	From - To	/ From - To			
K-packer	353'		6585'		
Screen	360'	382'	6578'	6556'	22'
Screen	387'	393'	6551'	6545'	6'
Screen	397'	467'	6541'	6471'	70'

SCREEN SPECIFICATIONS:

Slot: 0.020" Composition 3" PVC

FILTER PACKING:

Volume: _____ (bags)(ft³) Sand Specs. _____
 Method: N/A

WELL STIMULATION: Method Airlift

Yield: Good / Moderate / Poor

PW-102