

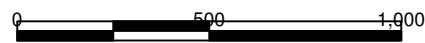
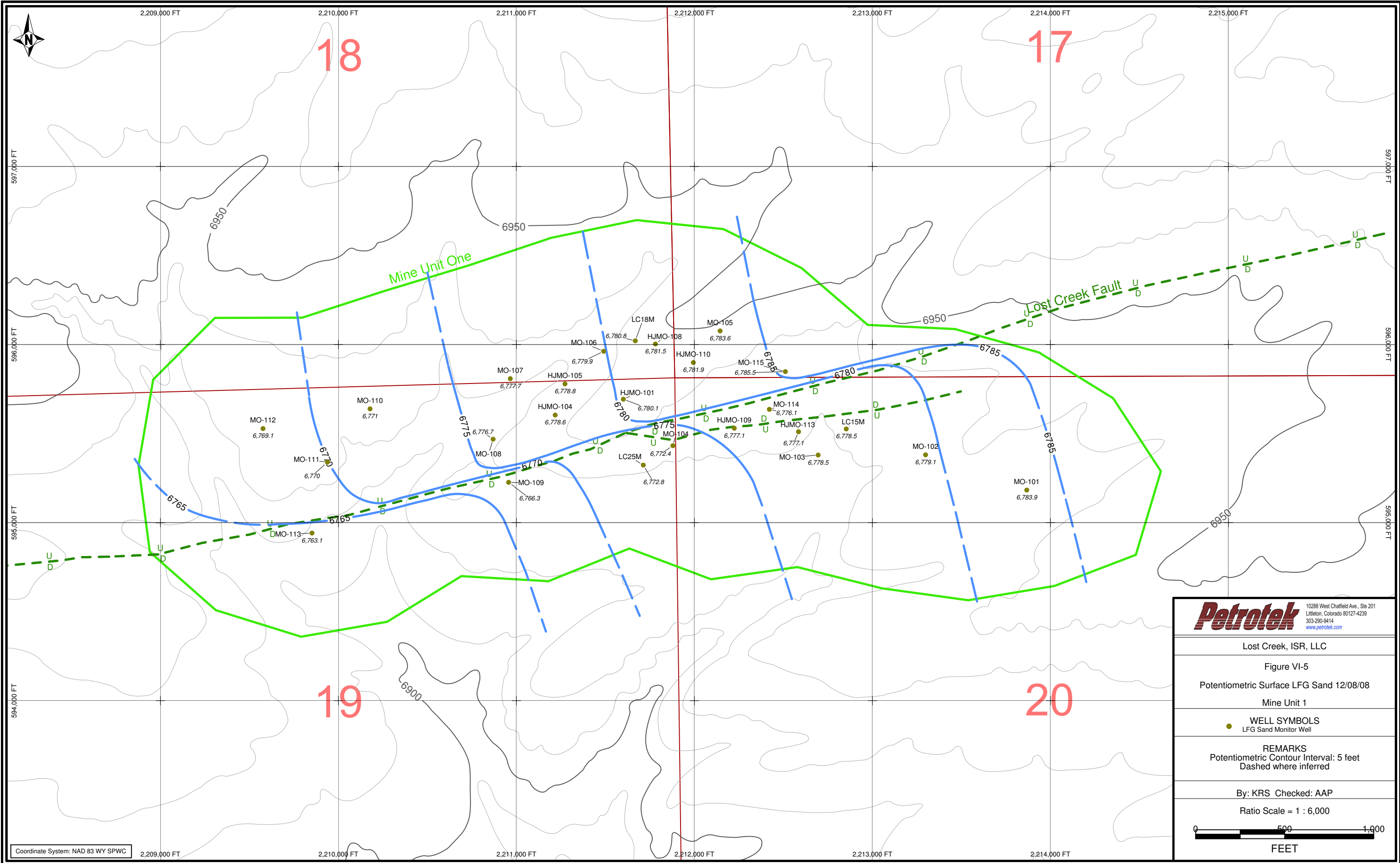
 <small>10288 West Chatfield Ave., Ste 201 Littleton, Colorado 80127-4239 303-290-9414 www.petrotek.com</small>	
Lost Creek, ISR, LLC	
Figure VI-4	
Potentiometric Surface HJ Horizon	
12/08/08 Mine Unit 1	
<b>WELL SYMBOLS</b>  HJ Sand Monitor Well  HJ Sand Pumping Well	
<b>REMARKS</b> Potentiometric Contour Interval: 5 feet Dashed where inferred	
By: KRS Checked: AP	
Ratio Scale = 1 : 6,000	
 FEET	

Coordinate System: NAD 83 WY SPWC



**Petrotek** 10288 West Chatfield Ave., Ste 201  
 Littleton, Colorado 80127-4239  
 303-290-9414  
 www.petrotek.com

Lost Creek, ISR, LLC

Figure VI-5  
 Potentiometric Surface LFG Sand 12/08/08  
 Mine Unit 1

WELL SYMBOLS  
 LFG Sand Monitor Well

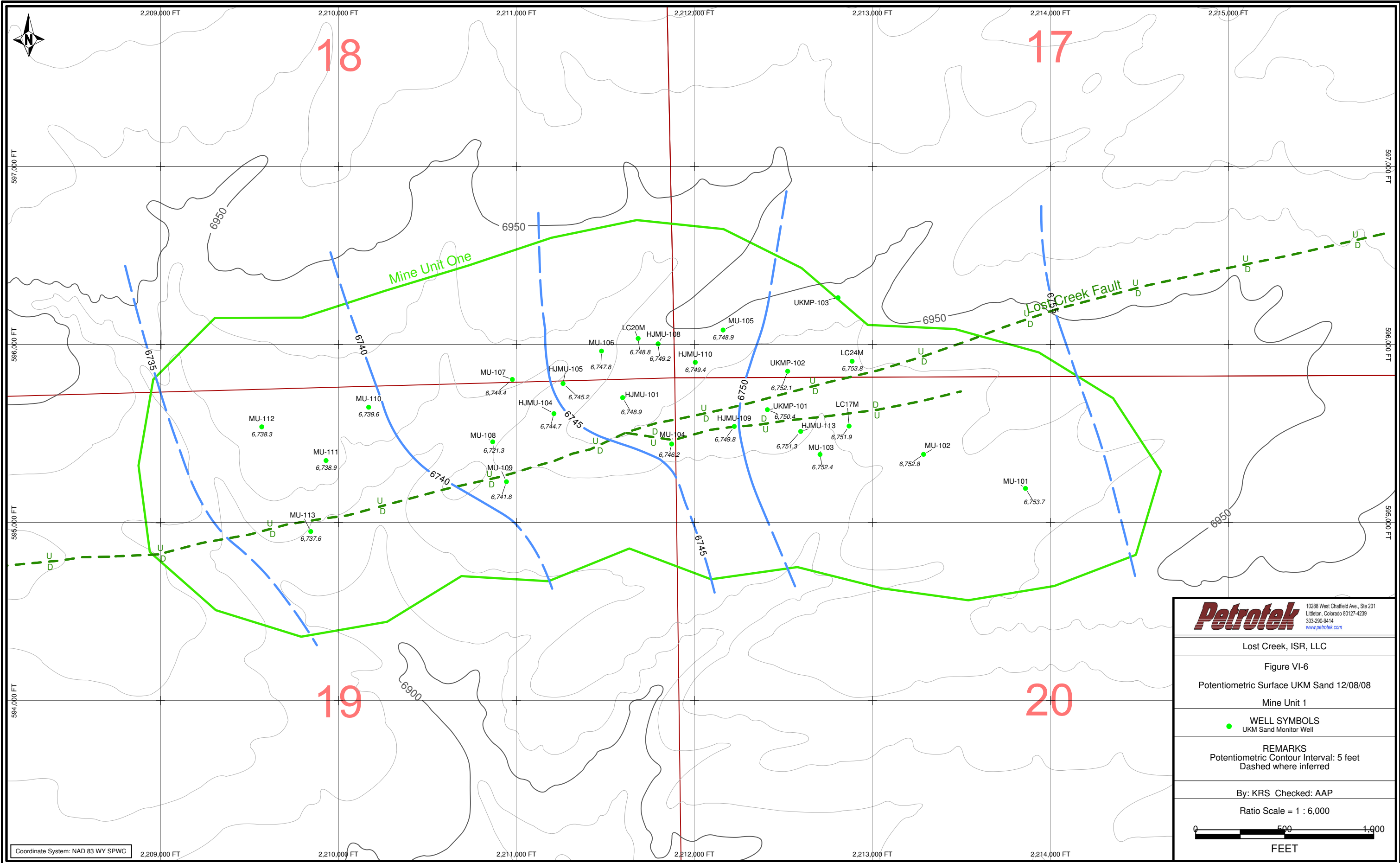
REMARKS  
 Potentiometric Contour Interval: 5 feet  
 Dashed where inferred

By: KRS Checked: AAP

Ratio Scale = 1 : 6,000

0 500 1,000  
 FEET

Coordinate System: NAD 83 WY SPWC



**Petrotek** 10288 West Chatfield Ave., Ste 201  
 Littleton, Colorado 80127-4239  
 303-290-9414  
[www.petrotek.com](http://www.petrotek.com)

Lost Creek, ISR, LLC

Figure VI-6  
 Potentiometric Surface UKM Sand 12/08/08  
 Mine Unit 1

WELL SYMBOLS  
 UKM Sand Monitor Well

REMARKS  
 Potentiometric Contour Interval: 5 feet  
 Dashed where inferred

By: KRS Checked: AAP

Ratio Scale = 1 : 6,000

0 500 1,000  
 FEET

Coordinate System: NAD 83 WY SPWC