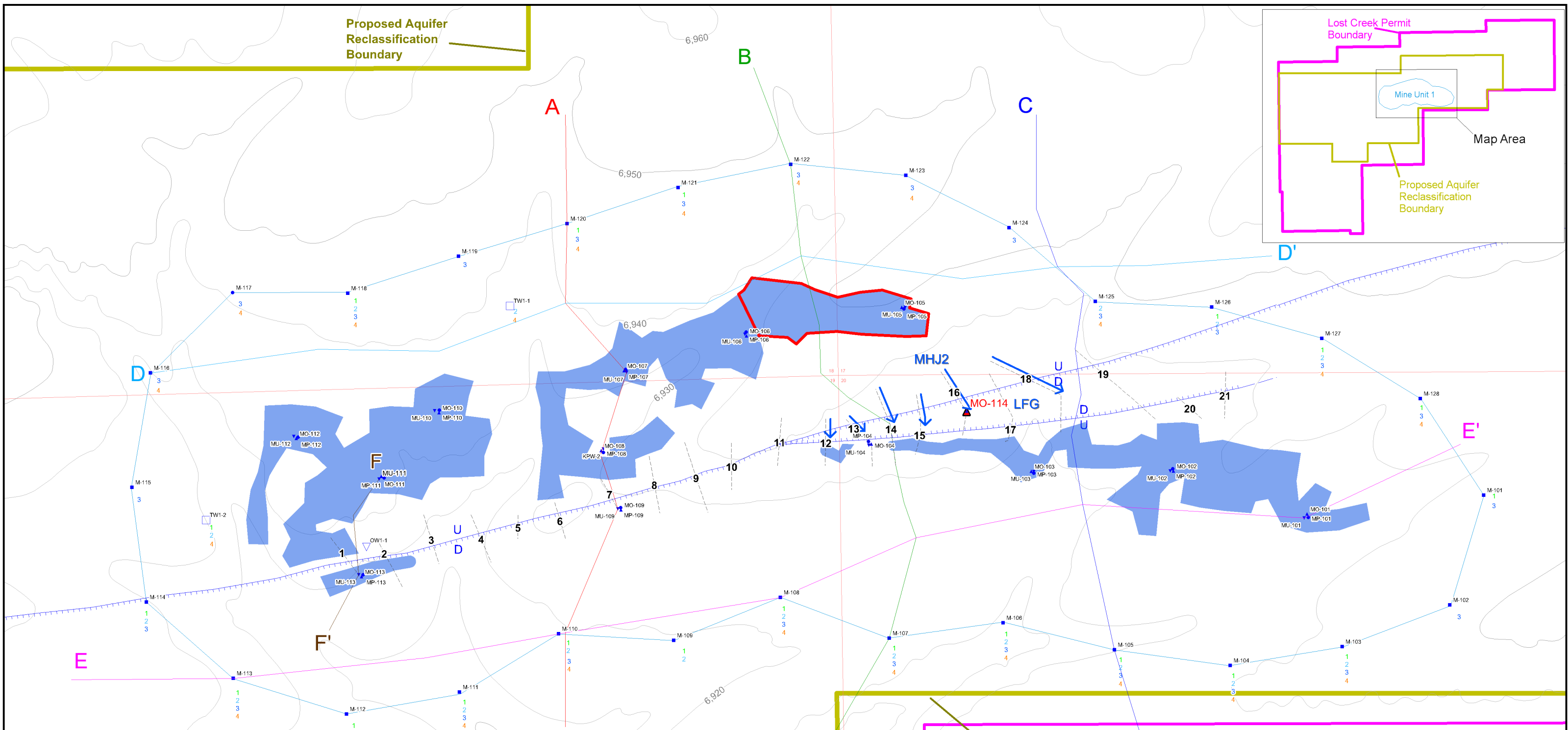
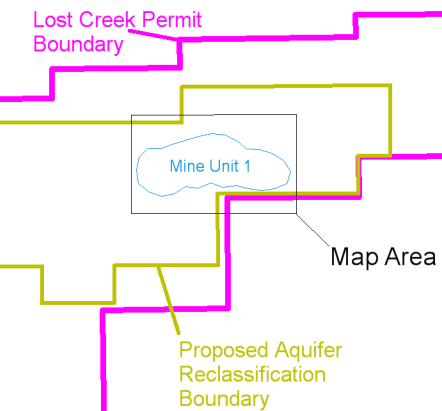


**Proposed Aquifer
Reclassification
Boundary**



LEGEND

- Perimeter Monitor Ring Wells
- ▲ Overlying Monitor Wells
- Production Zone Monitor Wells
- ▼ Underlying Monitor Wells
- HJ Trend Well
- ▽ UKM Observation Well

Perimeter Monitor Ring Well Completion Intervals:

1=UHJ	3=MHJ2
2=MHJ1	4=LHJ

- Lost Creek Fault associated with MU1
- ← Juxtaposition of MHJ2 to overlying LFG - arrow indicates direction of potential excursion
- Proposed MHJ2 Production Pattern Area
- Pattern areas that could have potential for excursion across fault
- ▲ Well-### Existing well that will serve as across fault monitor



Lost Creek ISR, LLC
Littleton, Colorado, USA

Figure VII-10
MHJ2 Pattern Area in Mine Unit 1
MHJ2 Sand vs LFG Sand
Lost Creek Permit Area

Issued For: WDEQ Drawn By: JKC

Issued/Revised: 22 February 2011

Drawing No: WDEQMU1AppFIGVII-10

0 400 feet

1 Inch = 400 feet